



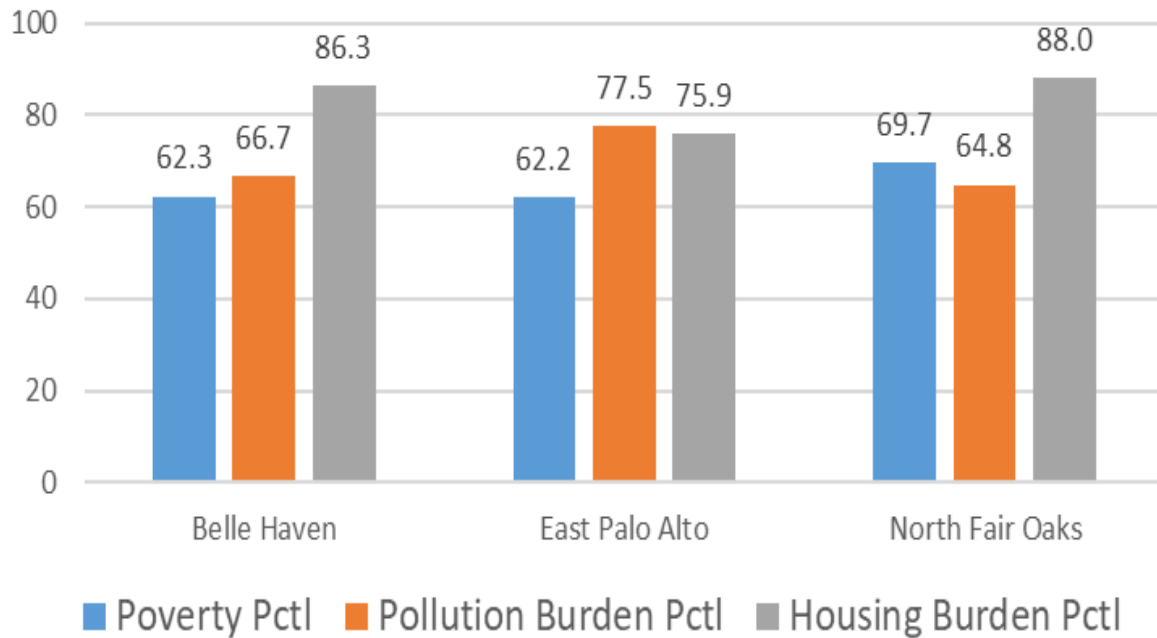
**Empowering community voices  
to implement equitable climate  
solutions for unity, resilience,  
and justice.**



# Our Communities

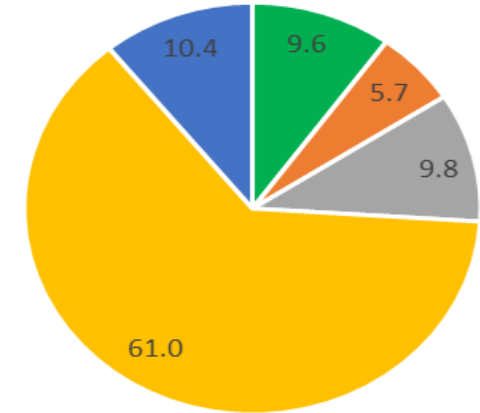
## Community Challenges

(Rank among CA Communities)



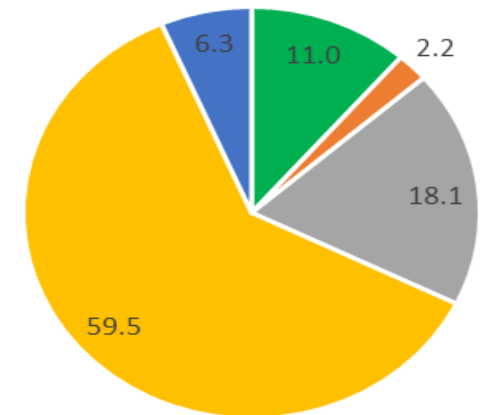
## East Palo Alto

- Pacific Islander (%)
- Asian American (%)
- African American (%)
- Hispanic (%)
- White (%)



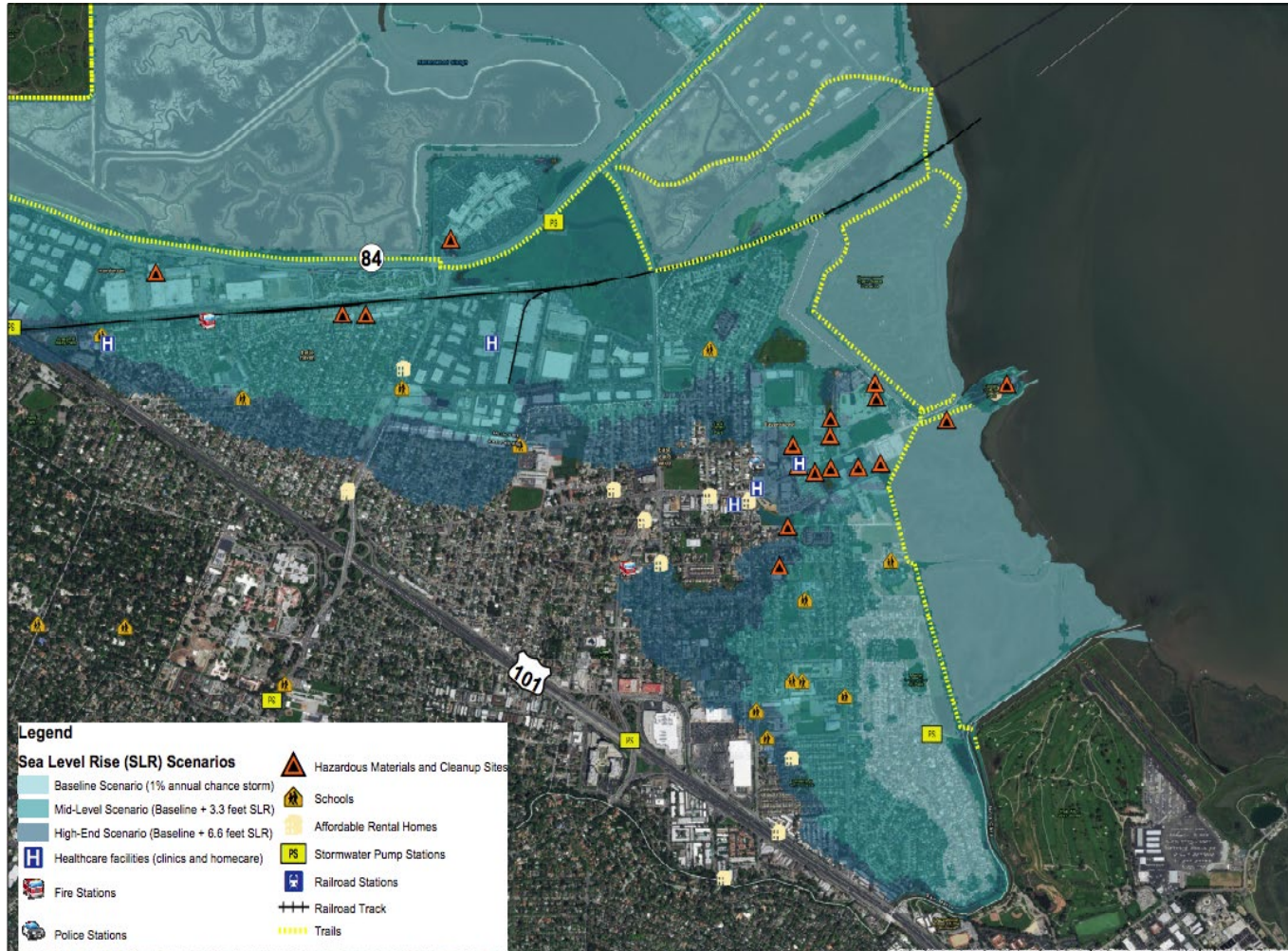
## Belle Haven

- Pacific Islander (%)
- Asian American (%)
- African American (%)
- Hispanic (%)
- White (%)



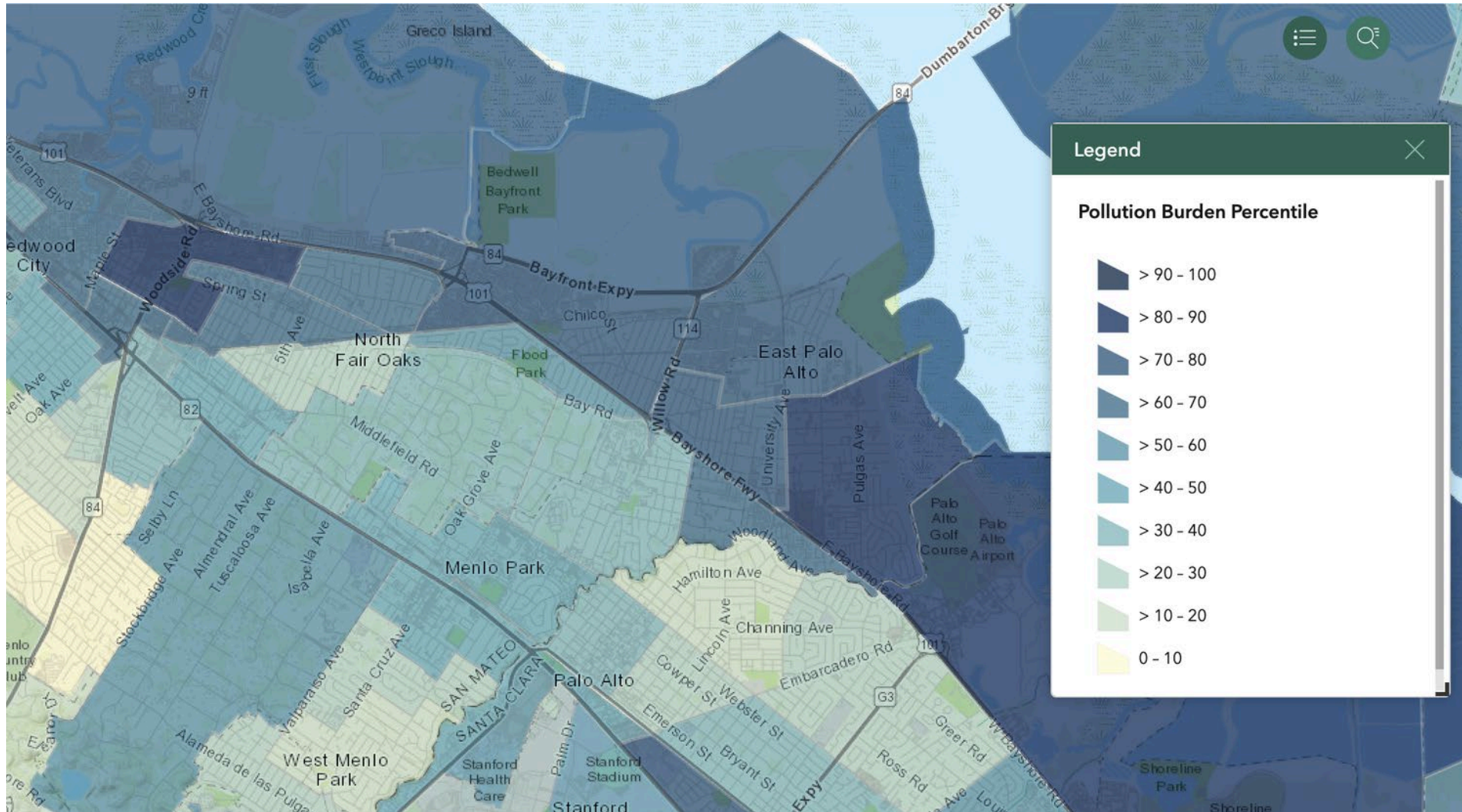


# Climate Change in East Palo Alto

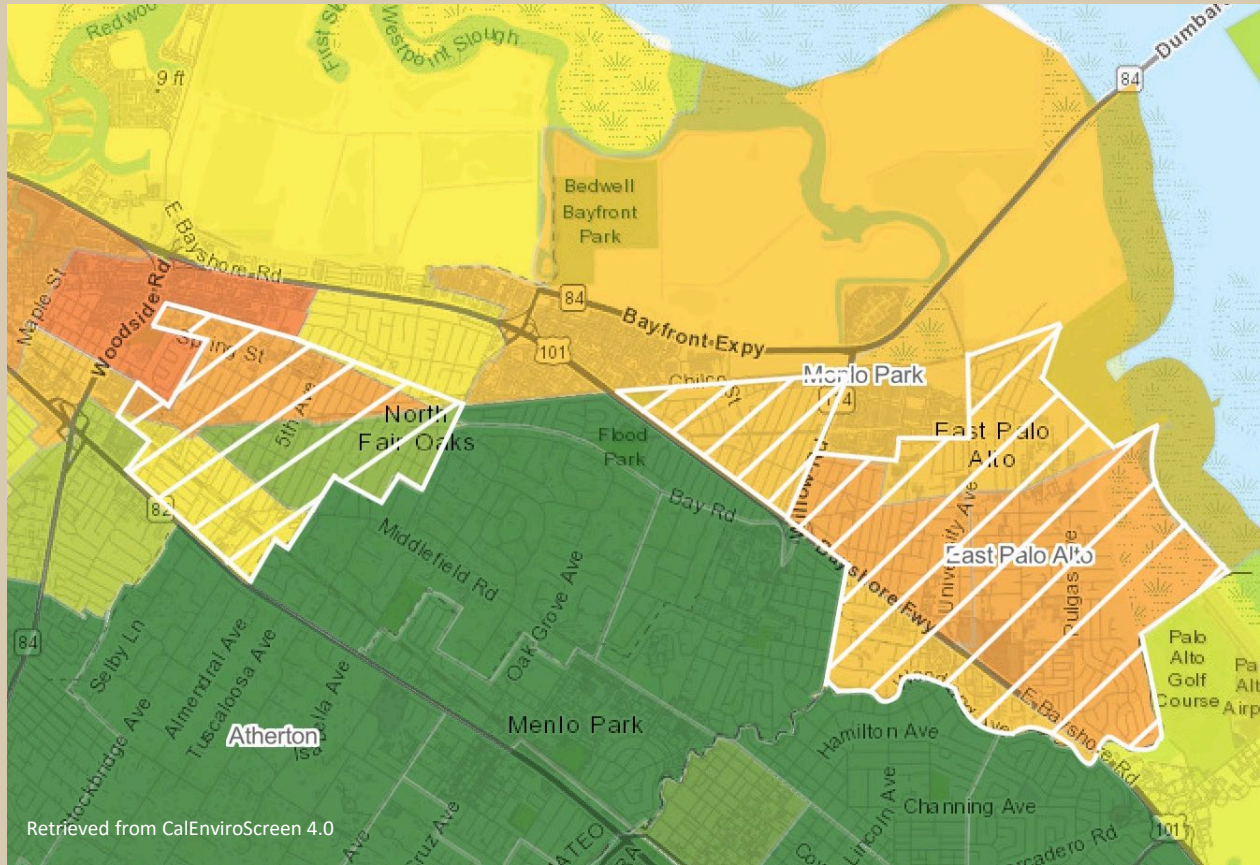


- Rising Sea Levels
- Extreme Climate Conditions
- Higher occurrence of extreme rainfall
- Increase average temperature
- 51% FEMA Flood Zone

# Air Pollution & Asthma







## Resilient Communities



## Resilient Education



## Resilient Homes



- Help residents reduce their energy costs, improve home health, and gain access to resources like solar
- “Case manager” model
  - Partnerships
- 200+ families have completed projects to date
- Workshops & community events on saving energy



## Community- Based Adaptation



## Climate Action Education



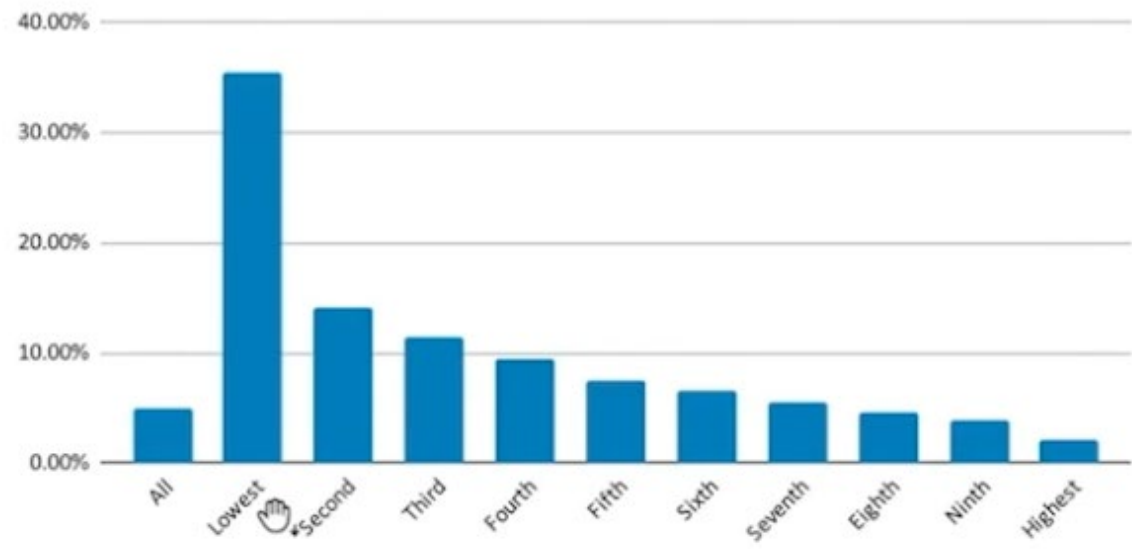
## Resilient Homes



# Why is Electrification Important?



Energy Expenditures as percentage of household income.



# Roadblocks to Electrification

1. Financial Barriers & Incentive Structures
2. The Problem of Deferred Maintenance
3. What to do with Renters?



# Financial Barriers & Incentive Structures

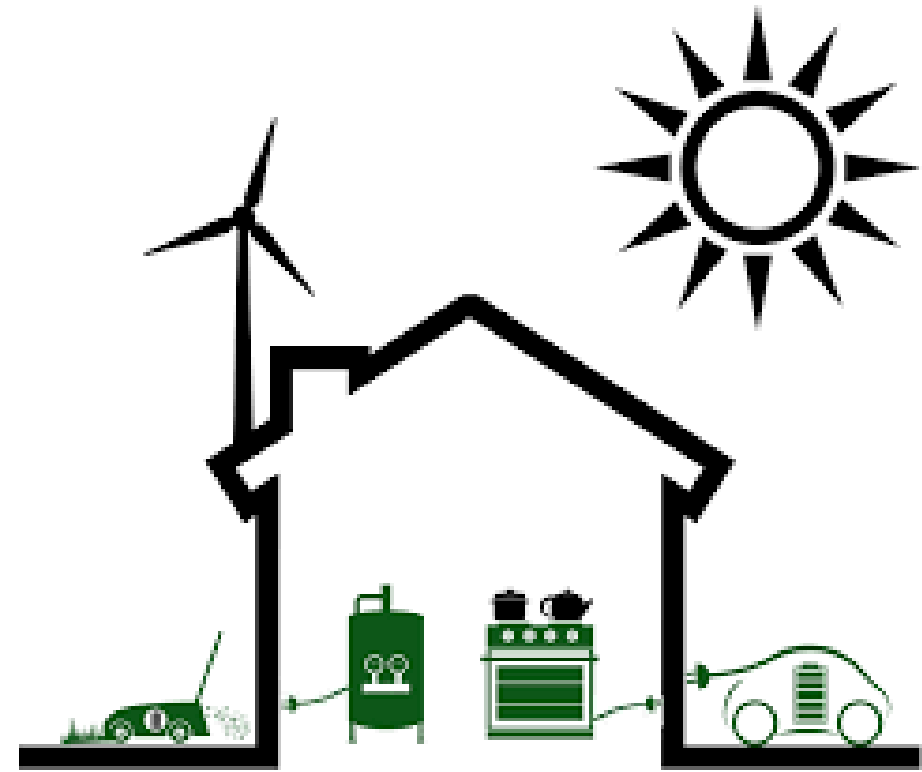
## Water Heater:

- *Gas: \$500-\$1000*
- *Heat Pump: \$1,500-\$3,000*

## Stove:

- *Gas: ~\$700*
- *Induction: start at ~\$1,000*

(and don't forget about outlets and panel upgrades! \$\$\$)



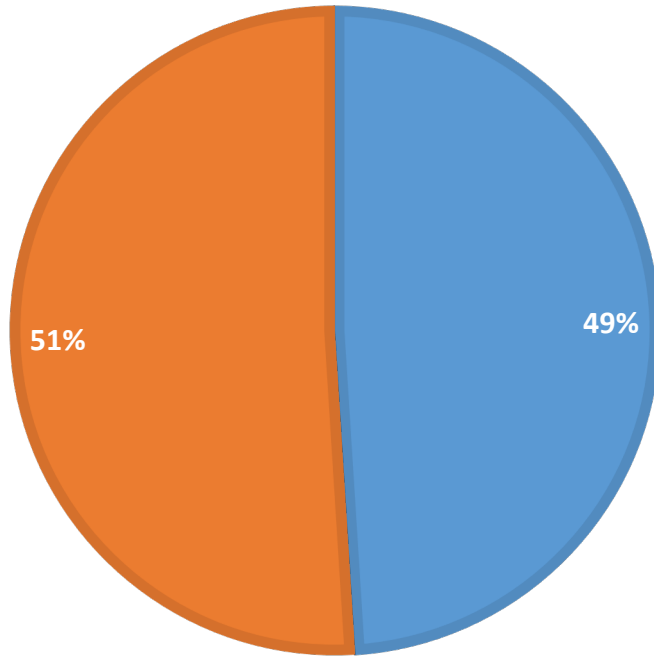
# The Problem of Deferred Maintenance



# What to do with Renters?

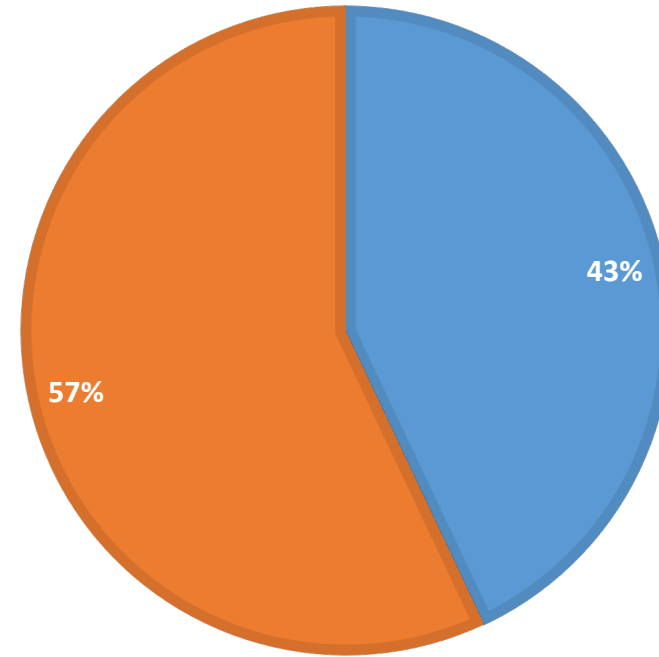
EAST PALO ALTO

■ Homeowners ■ Renters



NORTH FAIR OAKS

■ Homeowners ■ Renters





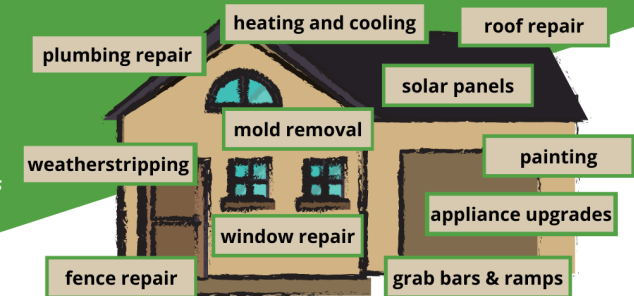
- CRC's Resilient Homes Program
- Peninsula Clean Energy Home Upgrade Program
- El Concilio of San Mateo County

## In need of home repairs?



...

*Our Resilient Homes program connects income-qualified homeowners with free or low-cost home repair services and energy upgrades.*



### about CRC

Climate Resilient Communities (CRC) helps income-qualified residents reduce their energy costs, improve home health, and gain access to local resources like subsidized solar panels, home energy audits, and weatherization upgrades. CRC has helped more than 200 families in East Palo Alto and Belle Haven complete major home upgrades for better safety, energy efficiency, and climate resilience.

### what to expect



Schedule a time for CRC staff to visit your home and talk about what programs you might be eligible for.



Work with CRC to fill out an application and gather any needed documents.



Service partners review and approve application.



Repairs are implemented by the service provider's contractors.



### contact us to learn more



(408) 990 - 6447



[crc@acterra.org](mailto:crc@acterra.org)



[climateresilientcommunities.org/resilient-homes](http://climateresilientcommunities.org/resilient-homes)

# Mele's Home Upgrade (East Palo Alto)



## REPAIRS PROVIDED:

- ✓ New window wall heat pump (previously no heat)
- ✓ New **induction oven**
- ✓ Fix two broken **windows**
- ✓ **Weatherstripping** around doors
- ✓ Repair leaky bathroom pipe and kitchen **faucet**
- ✓ **Clean mold** in two closets
- ✓ Add **ventilation** to the kitchen
- ✓ Repair and replace kitchen **cabinet doors**
- ✓ Install **grab bar** in the shower to prevent falls

# SO... What can we do?



- Recognize different starting points
- Structuring of rebates to increase access
- Ensure tenant protection and access to programs for renters



# GET IN TOUCH

## SEND ME AN EMAIL

caroline.beckman@crcommunities.org

## VISIT OUR WEBSITE

CRCOMMUNITIES.ORG

## SIGN UP FOR OUR NEWSLETTER



@Climate Resilient Communities



@CRC\_climate



@CRC\_climate



@CRC.climate