

February 1, 2011

VIA ELECTRONIC MAIL & U.S. MAIL

Julie Fitch  
Director, Energy Division  
California Public Utilities Commission  
505 Van Ness Avenue  
San Francisco, CA 94102

Dear Ms. Fitch:

Pursuant to the Energy Division's letter of November 26, 2007 regarding regulatory reporting requirements for the Low Income Energy Efficiency (LIEE) and California Alternate Rate for Energy (CARE) programs, Southern California Edison Company (SCE) on behalf of itself and Pacific Gas and Electric Company (PG&E), San Diego Gas & Electric Company (SDG&E), and Southern California Gas Company (SoCalGas) (collectively, the "Joint Utilities"), hereby submits the following:

- Attachment A hereto: Joint Utilities' Annual LIEE, CARE and FERA Charts; and
- Attachment B hereto: Quarterly charts for the fourth quarter 2010 containing (1) a comparison of authorized budget with total expense, by utility; (2) a year-to-date chart on authorized budget versus expenses, by utility; and (3) a comparison of number of homes treated with goal for number of homes treated, by utility.

Very truly yours,

/s/ MONICA GHATTAS  
Monica Ghattas

cc: Administrative Law Judge Kimberly H. Kim, CPUC  
Sarita Sarvate, CPUC  
Syreeta Gibbs, CPUC  
Ava Tran, CPUC  
Torry Francisco, CPUC  
Megha Lakhchaura, CPUC  
Service list for A.08-05-022

MG:ml 1700850

Attachment A  
Joint Utilities' Annual LIEE, CARE and FERA Charts

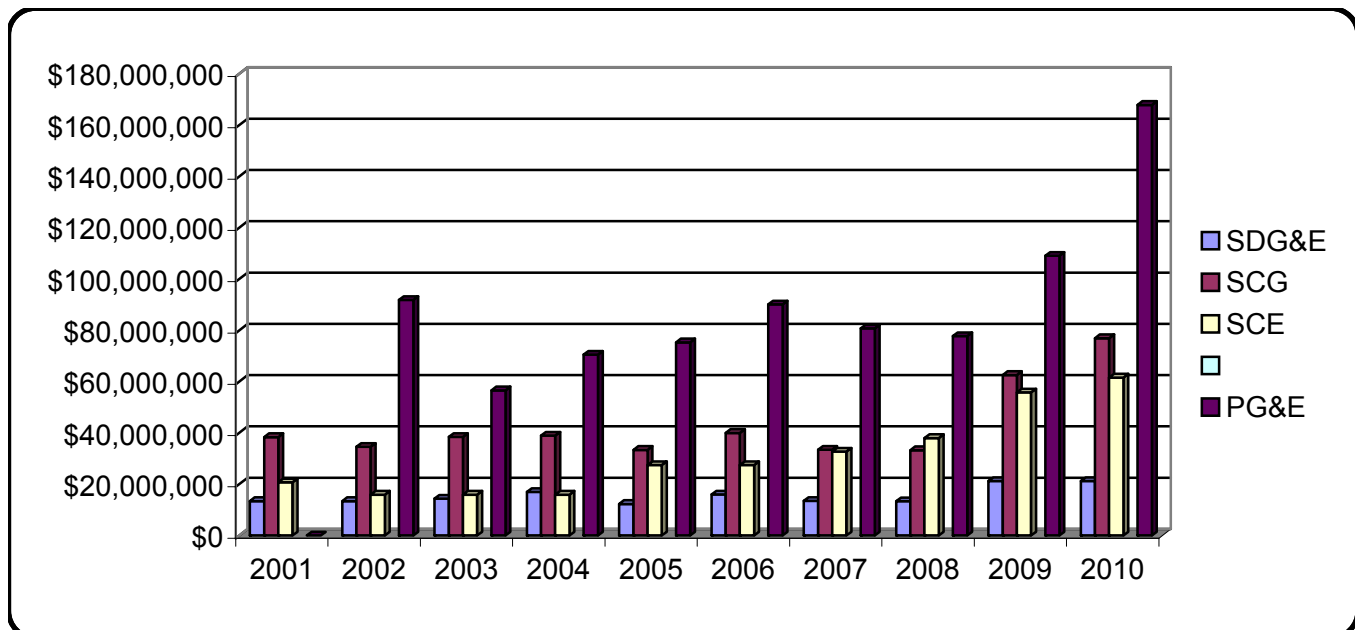
## LIEE Authorized Budget

	SDG&E	SCG	SCE	PG&E
2001	\$13,371,750	\$38,320,262	\$20,694,136	\$0
2002	\$13,368,093	\$34,521,502	\$15,893,500	\$91,786,260 <sup>2</sup>
2003	\$14,294,952	\$38,376,593	\$15,893,500	\$56,530,000
2004	\$16,916,503	\$38,899,153	\$15,893,500	\$70,481,326
2005	\$12,276,991	\$33,324,875	\$27,400,000	\$75,297,327
2006	\$15,939,221	\$39,968,140	\$27,400,000	\$90,094,496
2007	\$13,424,893	\$33,415,541	\$32,692,182	\$80,707,516
2008	\$13,302,750	\$33,211,971	\$37,977,380	\$77,733,500
2009	\$21,184,008	\$62,571,908	\$55,742,000	\$109,056,366
2010	\$21,184,008	\$76,872,816	\$61,561,081	\$167,847,834

<sup>1</sup> SCE – Per D.08-11-031, Ordering Paragraph 85, SCE reports a fund shift of \$4.5 million in November 2008 from the “Electric Appliances” subcategory in the 2009-2011 program cycle in order to “carry back” funds into the 2008 program to allow the program to continue seamless operation and meet demand through year-end 2008. The \$4.3 million is less than 15% of the currently authorized program cycle budget.

<sup>2</sup> PG&E has combined the values for PY2001-2002 so as to be consistent with the approach it used in seeking recovery for the PG&E Low Income Energy Efficiency Memorandum Account which was approved by the CPUC on September 7, 2007.

Utilities’ 2010 data are preliminary and may change in the LIEE Annual Reports to be filed on May 1, 2011.

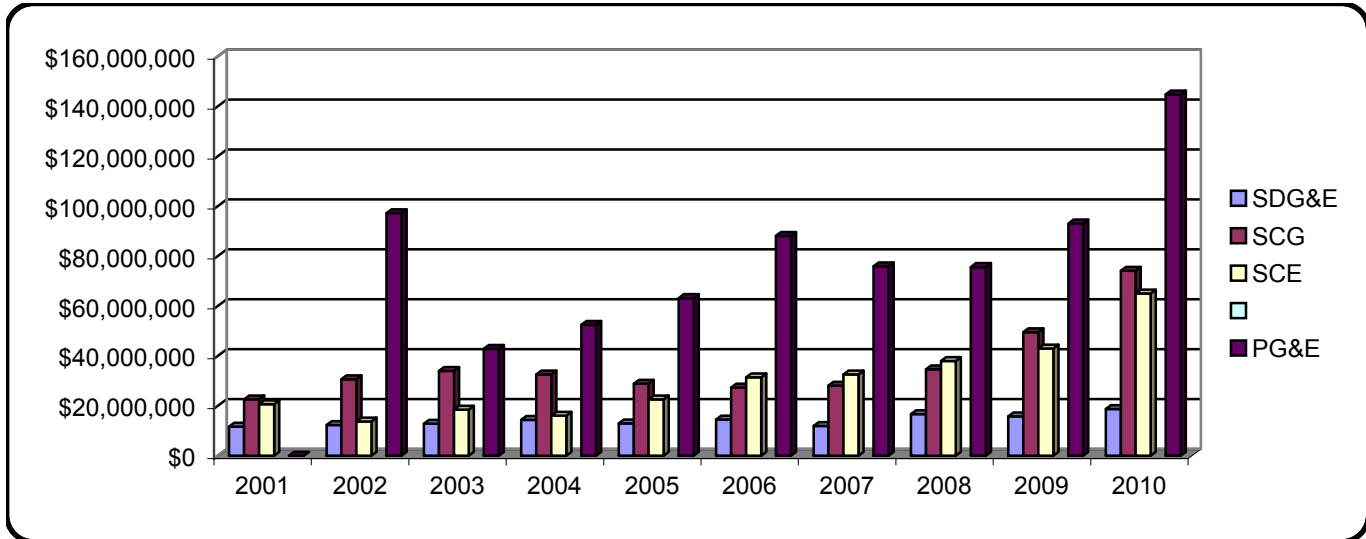


## LIEE Total Expensed

	SDG&E	SCG	SCE	PG&E
2001	\$11,624,160	\$22,596,860	\$20,694,136	\$0
2002	\$12,346,104	\$30,666,411	\$13,719,455	\$97,139,141 <sup>1</sup>
2003	\$12,866,391	\$33,998,942	\$18,403,878	\$42,832,766
2004	\$14,405,365	\$32,595,808	\$15,997,665	\$52,423,455
2005	\$12,970,508	\$28,834,254	\$22,620,436	\$63,148,667
2006	\$14,435,838	\$27,317,476	\$31,371,759	\$88,045,621
2007	\$11,944,508	\$28,044,189	\$32,580,026	\$75,916,902
2008	\$16,715,066	\$34,662,899	\$37,965,116	\$75,580,461
2009	\$15,799,764	\$49,468,562	\$42,910,673	\$93,016,352
2010	\$18,724,577	\$74,153,540	\$64,983,944	\$144,754,628

<sup>1</sup> PG&E has combined the values for PY2001-2002 so as to be consistent with the approach it used in seeking recovery for the PG&E Low Income Energy Efficiency Memorandum Account which was approved by the CPUC on September 7, 2007.

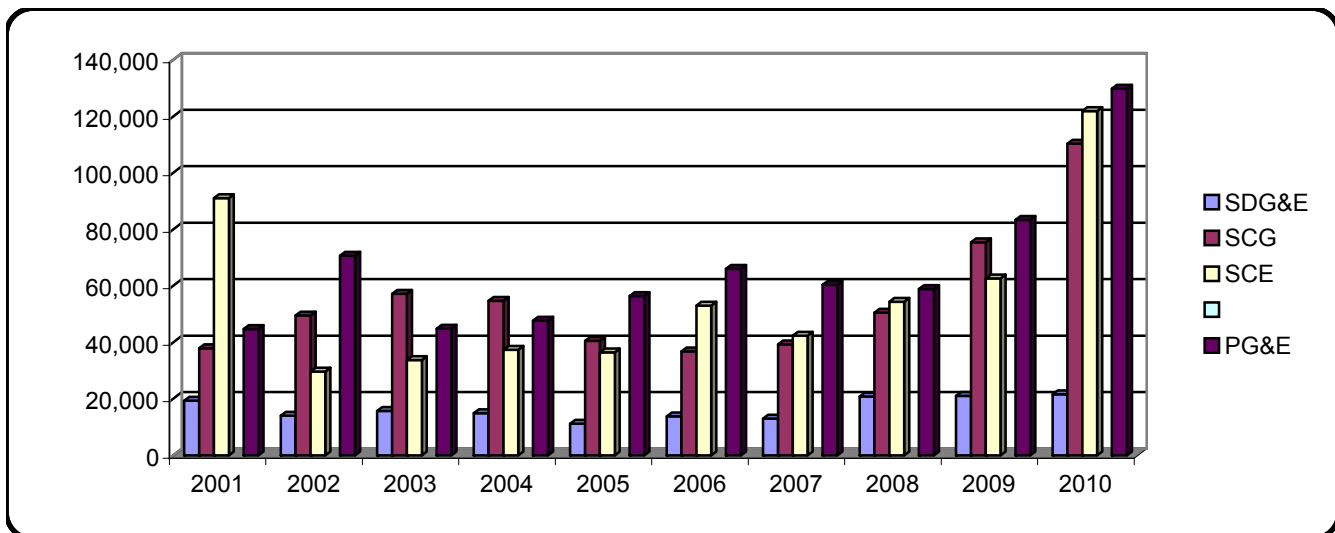
Utilities' 2010 data are preliminary and may change in the LIEE Annual Reports to be filed on May 1, 2011.



## LIEE # of Homes Treated

	SDG&E	SCG	SCE	PG&E
2001	19,315	37,954	91,065	44,797
2002	14,089	49,464	29,685	70,683
2003	15,706	57,179	33,731	44,837
2004	14,897	54,677	37,348	47,702
2005	11,254	40,523	36,420	56,388
2006	13,771	36,843	53,017	66,043
2007	13,074	39,352	42,316	60,368
2008	20,831	50,568	54,346	58,950
2009	21,031	75,418	62,624	83,347
2010	21,603	110,296	121,868	129,856

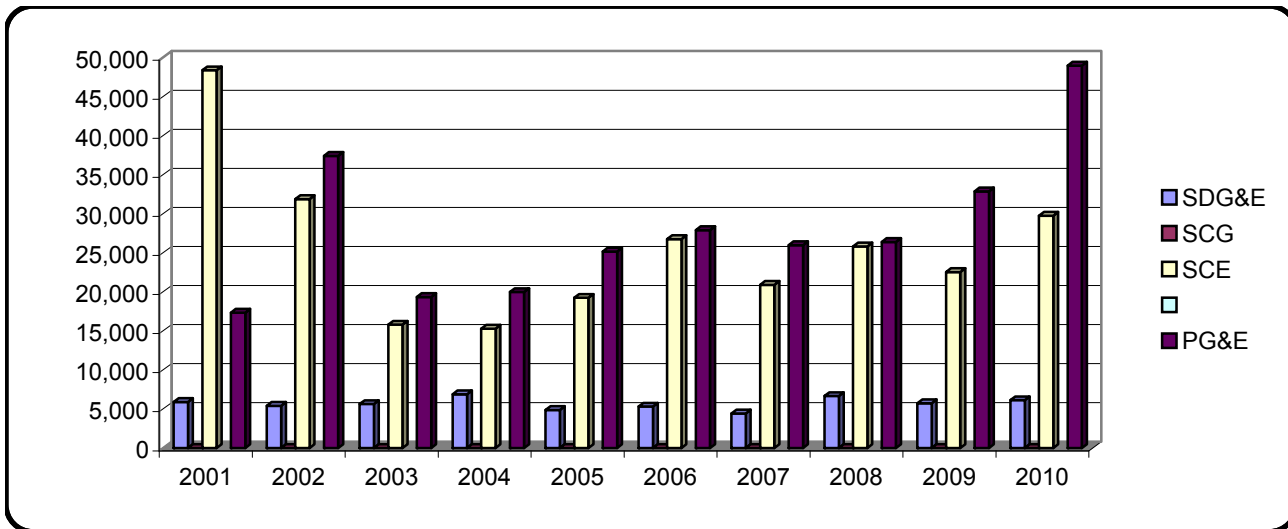
Utilities' 2010 data are preliminary and may change in the LIEE Annual Reports to be filed on May 1, 2011.



## LIEE Energy Savings (MWH)

	SDG&E	SCG	SCE	PG&E
2001	5,902	0	48,376	17,346
2002	5,402	0	31,890	37,409
2003	5,640	0	15,794	19,342
2004	6,887	0	15,287	19,974
2005	4,885	0	19,240	25,153
2006	5,312	0	26,762	27,916
2007	4,428	0	20,895	25,974
2008	6,668	0	25,829	26,388
2009	5,745	0	22,544	32,871
2010	6,130	0	29,743	48,981

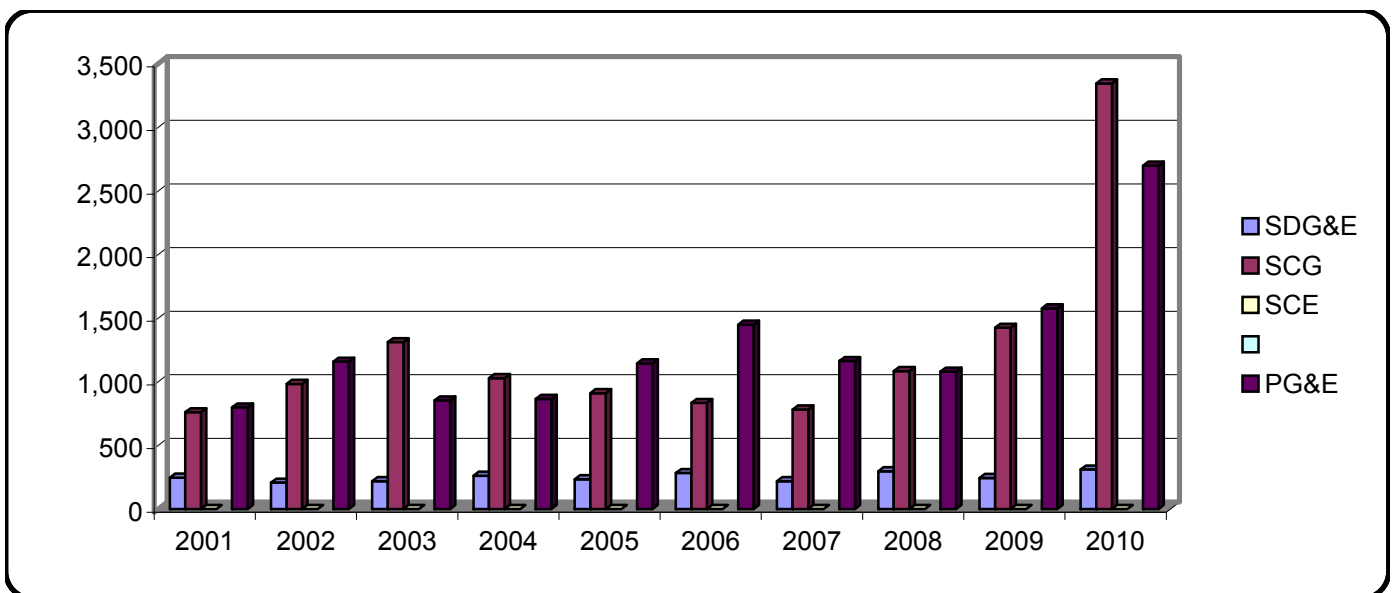
Utilities' 2010 data are preliminary and may change in the LIEE Annual Reports to be filed on May 1, 2011.



## LIEE Energy Savings (MTherms)

	SDG&E	SCG	SCE	PG&E
2001	247	762	0	799
2002	208	984	0	1,159
2003	220	1,312	0	855
2004	263	1,030	0	866
2005	234	911	0	1,145
2006	284	834	0	1,450
2007	220	783	0	1,164
2008	297	1,085	0	1,081
2009	245	1,426	0	1,578
2010	311	3,346	0	2,700

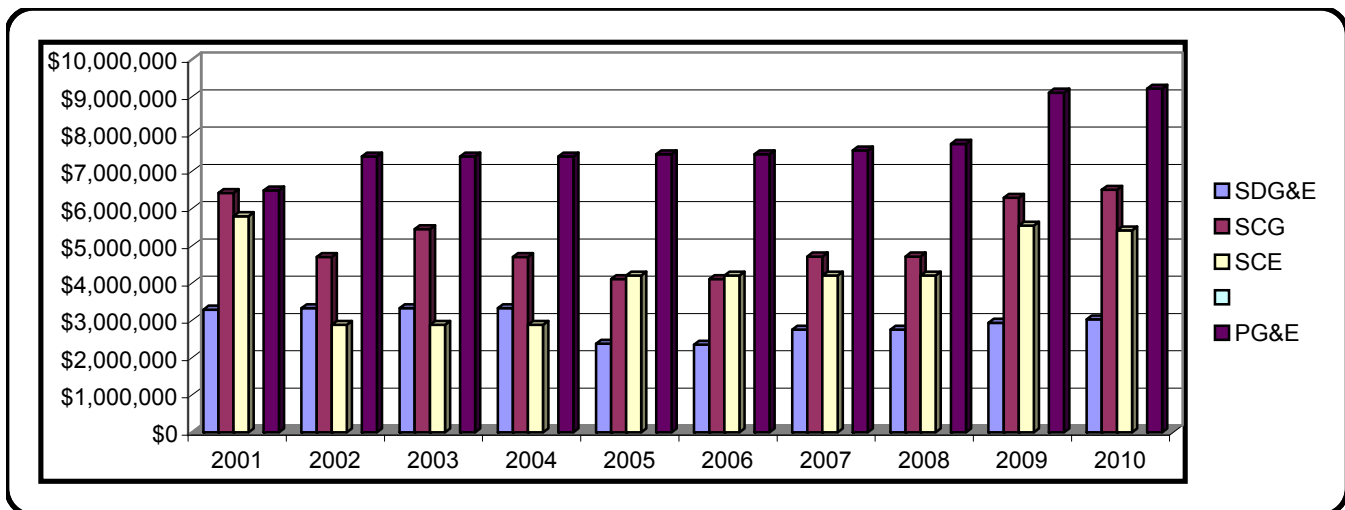
Utilities' 2010 data are preliminary and may change in the LIEE Annual Reports to be filed on May 1, 2011.



## CARE Authorized Administrative Budget

	SDG&E	SCG	SCE	PG&E
2001	\$3,288,000	\$6,413,369	\$5,793,000	\$6,481,400
2002	\$3,329,036	\$4,702,311	\$2,882,838	\$7,395,852
2003	\$3,329,036	\$5,449,656	\$2,882,838	\$7,395,852
2004	\$3,329,036	\$4,702,309	\$2,882,838	\$7,395,852
2005	\$2,373,482	\$4,107,310	\$4,199,000	\$7,457,000
2006	\$2,346,518	\$4,107,249	\$4,199,000	\$7,457,000
2007	\$2,753,575	\$4,713,118	\$4,199,000	\$7,557,000
2008	\$2,753,575	\$4,713,118	\$4,199,000	\$7,732,000
2009	\$2,935,632	\$6,286,664	\$5,541,000	\$9,106,000
2010	\$3,023,803	\$6,500,126	\$5,412,000	\$9,216,000

Utilities' 2010 data are preliminary and may change in the LIEE Annual Reports to be filed on May 1, 2011.

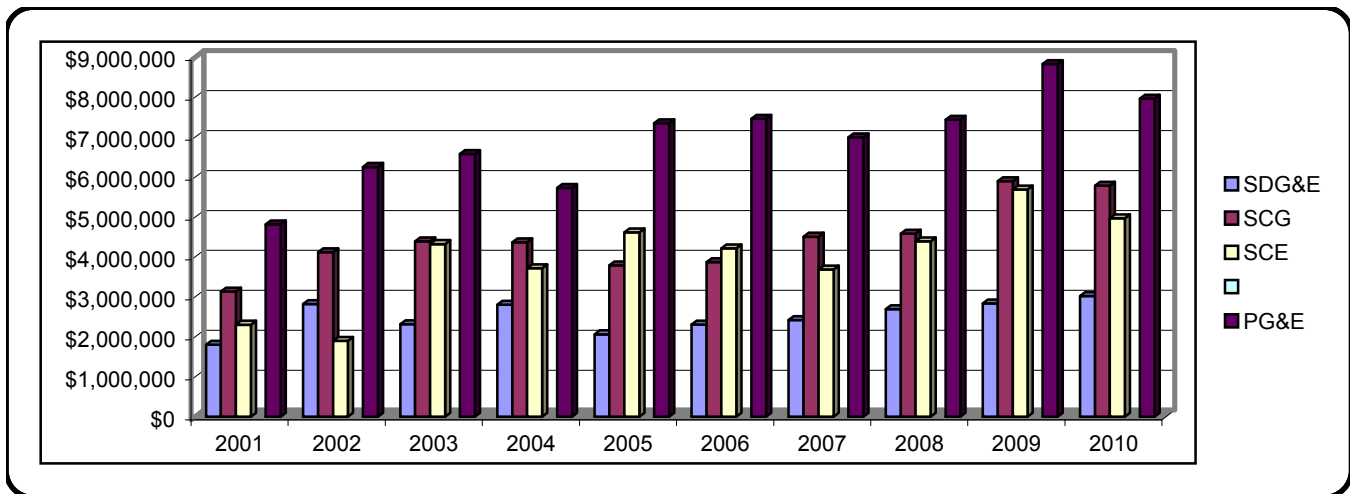




## CARE Administrative Expenses

	SDG&E	SCG	SCE	PG&E
2001	\$1,807,462	\$3,135,279	\$2,308,008	\$4,820,295
2002	\$2,821,109	\$4,121,783	\$1,901,628	\$6,259,603
2003	\$2,320,164	\$4,397,403	\$4,327,389	\$6,584,656
2004	\$2,808,078	\$4,371,843	\$3,725,134	\$5,737,345
2005	\$2,067,564	\$3,791,326	\$4,617,050	\$7,351,165
2006	\$2,312,235	\$3,877,378	\$4,217,365	\$7,463,331
2007	\$2,425,730	\$4,512,234	\$3,687,574	\$7,003,733
2008	\$2,694,118	\$4,585,577	\$4,398,020	\$7,439,976
2009	\$2,839,408	\$5,904,266	\$5,692,016	\$8,834,988
2010	\$3,026,383	\$5,792,823	\$4,974,144	\$7,970,145

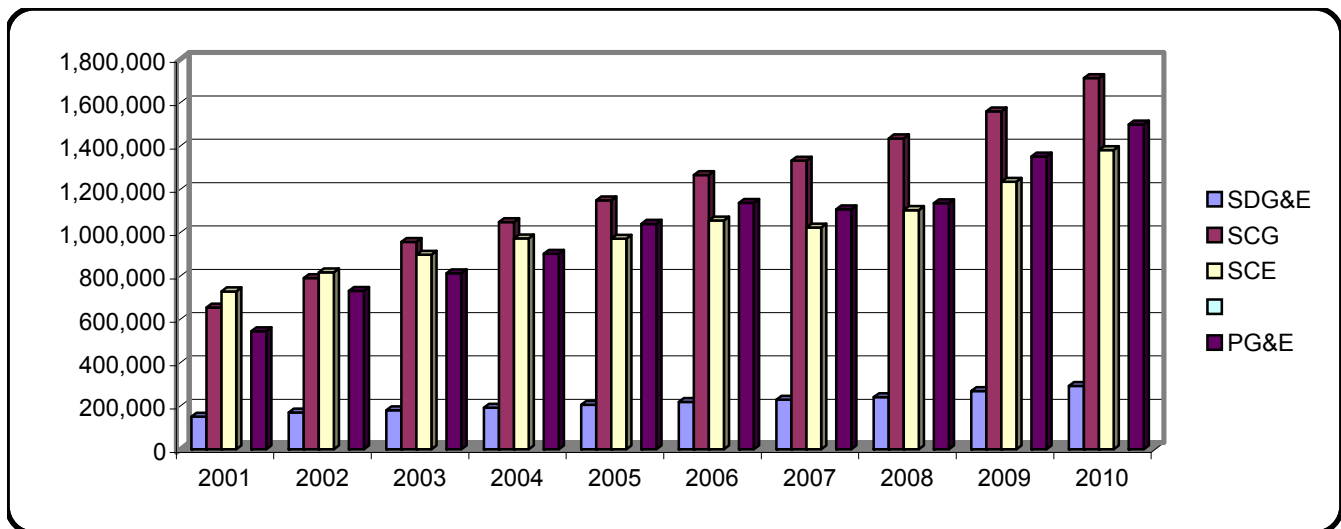
Utilities' 2010 data are preliminary and may change in the LIEE Annual Reports to be filed on May 1, 2011.



## CARE Participants

	SDG&E	SCG	SCE	PG&E
2001	151,121	655,455	729,367	545,175
2002	170,815	790,592	817,637	731,108
2003	181,028	957,602	899,148	812,204
2004	192,444	1,049,754	974,205	903,217
2005	205,456	1,149,859	972,488	1,040,986
2006	218,494	1,265,783	1,056,061	1,137,387
2007	229,759	1,332,614	1,024,148	1,107,733
2008	241,196	1,435,398	1,104,556	1,136,237
2009	269,517	1,560,543	1,235,123	1,351,415
2010	293,438	1,714,044	1,381,109	1,499,942

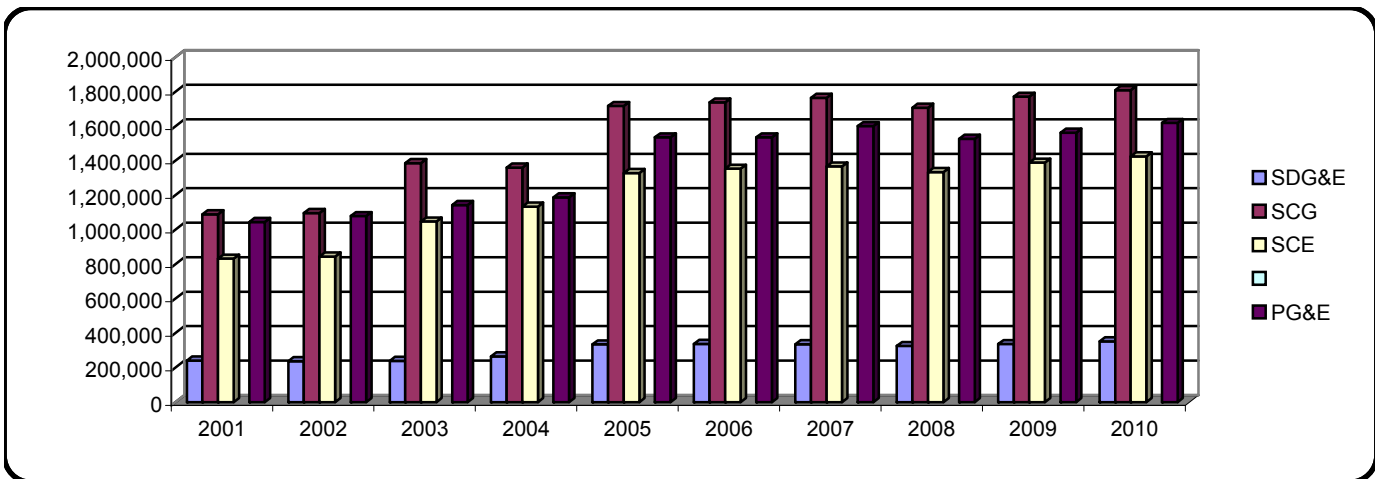
Utilities' 2010 data are preliminary and may change in the LIEE Annual Reports to be filed on May 1, 2011.



## CARE Estimated Eligible Customers

	SDG&E	SCG	SCE	PG&E
2001	241,282	1,090,361	832,900	1,045,252
2002	238,318	1,097,616	844,520	1,079,938
2003	239,806	1,386,613	1,048,353	1,144,184
2004	265,392	1,361,144	1,134,841	1,188,701
2005	335,697	1,718,350	1,329,472	1,536,146
2006	338,308	1,739,139	1,354,892	1,536,146
2007	336,410	1,765,408	1,367,169	1,601,240
2008	326,157	1,707,954	1,335,490	1,528,221
2009	337,540	1,772,015	1,390,134	1,563,788
2010	352,688	1,810,560	1,426,059	1,619,856

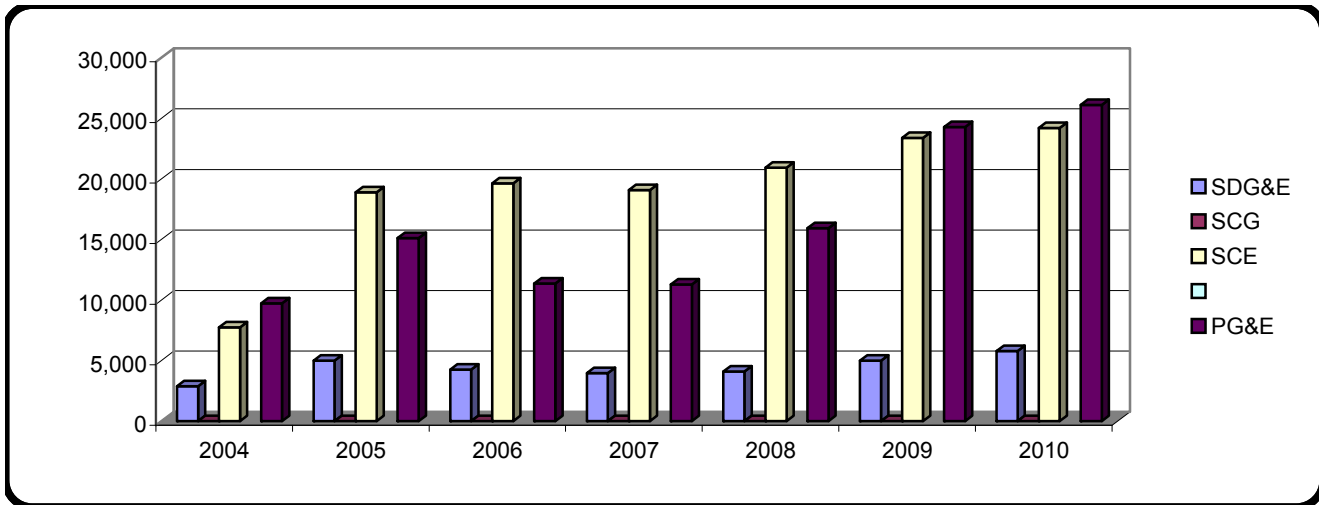
Utilities' 2010 data are preliminary and may change in the LIEE Annual Reports to be filed on May 1, 2011.



## FERA Participants

	SDG&E	SCG	SCE	PG&E
2004	2,894	N/A	7,759	9,729
2005	5,005	N/A	18,897	15,122
2006	4,249	N/A	19,627	11,359
2007	3,977	N/A	19,075	11,281
2008	4,105	N/A	20,922	15,932
2009	4,998	N/A	23,400	24,278
2010	5,801	N/A	24,219	26,115

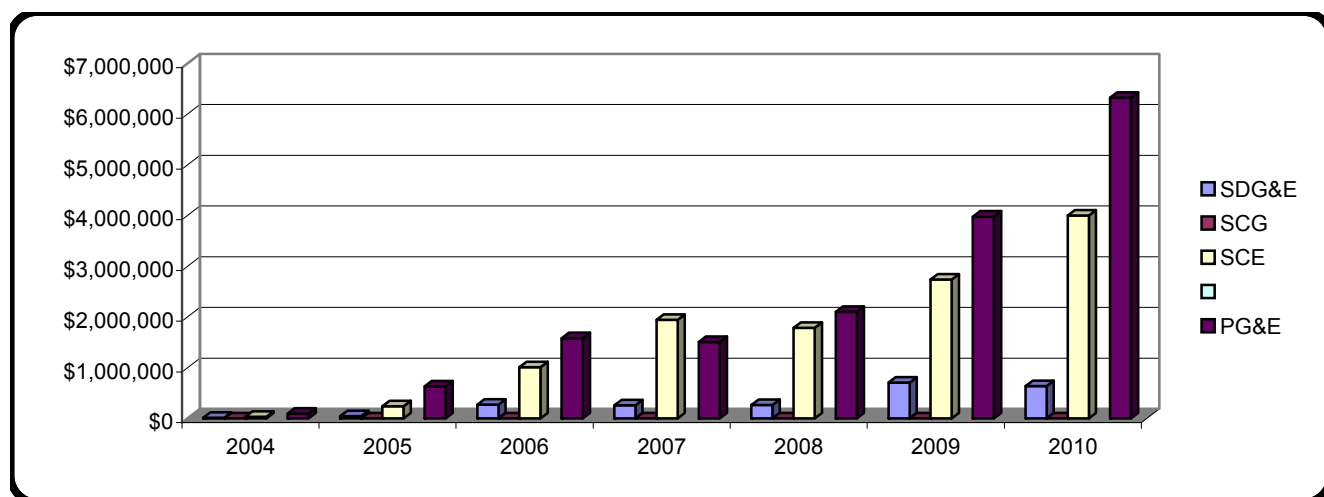
Utilities' 2010 data are preliminary and may change in the FERA Annual Reports to be filed on May 1, 2011.



## FERA Tier 3 Benefit

	SDG&E	SCG	SCE	PG&E
2004	\$16,503	N/A	\$35,017	\$97,851
2005	\$43,775	N/A	\$243,441	\$633,845
2006	\$273,180	N/A	\$1,009,812	\$1,581,745
2007	\$257,290	N/A	\$1,944,996	\$1,511,198
2008	\$268,932	N/A	\$1,784,849	\$2,100,026
2009	\$705,190	N/A	\$2,738,610	\$3,979,510
2010	\$638,091	N/A	\$3,999,477	\$6,324,300

Utilities' 2010 data are preliminary and may change in the FERA Annual Reports to be filed on May 1, 2011.

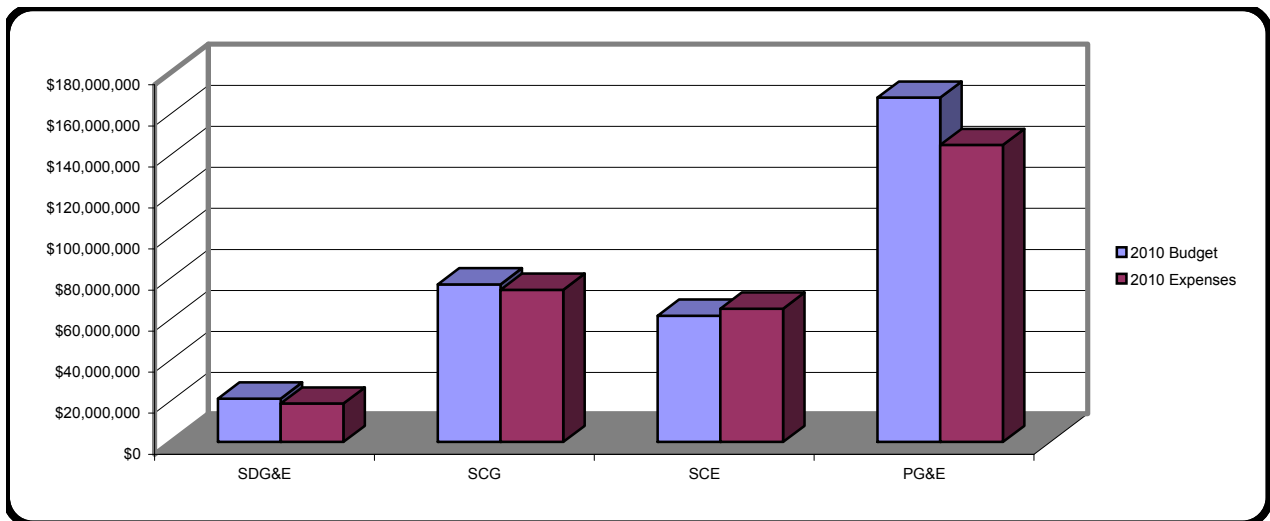


Attachment B  
Quarterly Charts for Fourth Quarter 2010

## LIEE Authorized Budget & Year-to-Date Expenses

	SDG&E	SCG	SCE	PG&E
2010 Budget	\$21,184,008	\$76,872,816	\$61,561,081	\$167,847,834
2010 Expenses	\$18,724,577	\$74,153,540	\$64,983,944	\$144,754,628

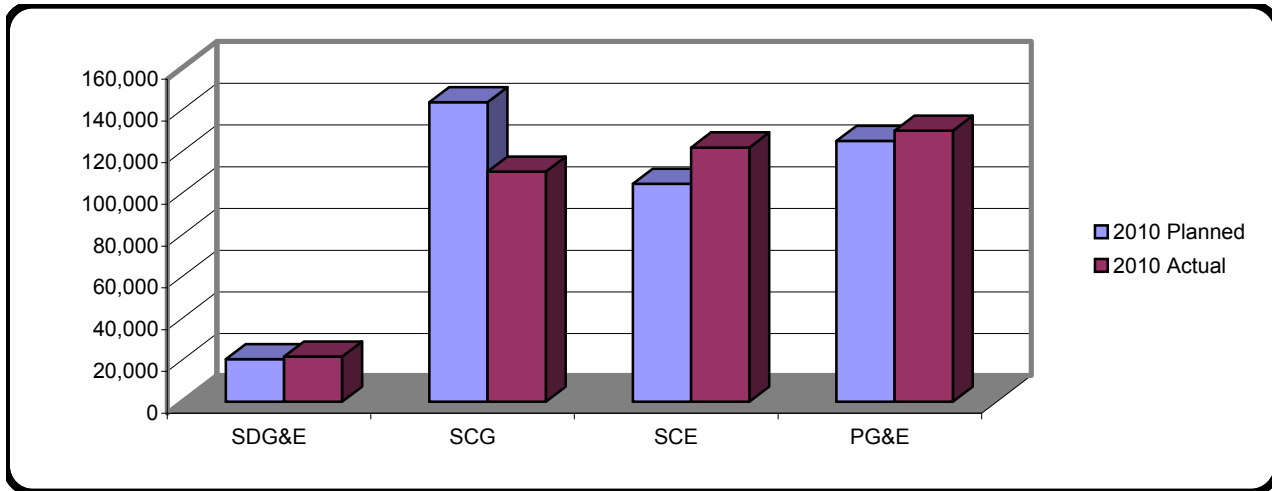
Utilities' 2010 data are preliminary and may change in the LIEE Annual Reports to be filed on May 1, 2011.



## LIEE Homes Treated - Year-to-Date

	SDG&E	SCG	SCE	PG&E
2010 Planned	20,384	143,540	104,500	124,991
2010 Actual	21,603	110,296	121,868	129,856

Utilities' 2010 data are preliminary and may change in the LIEE Annual Reports to be filed on May 1, 2011.

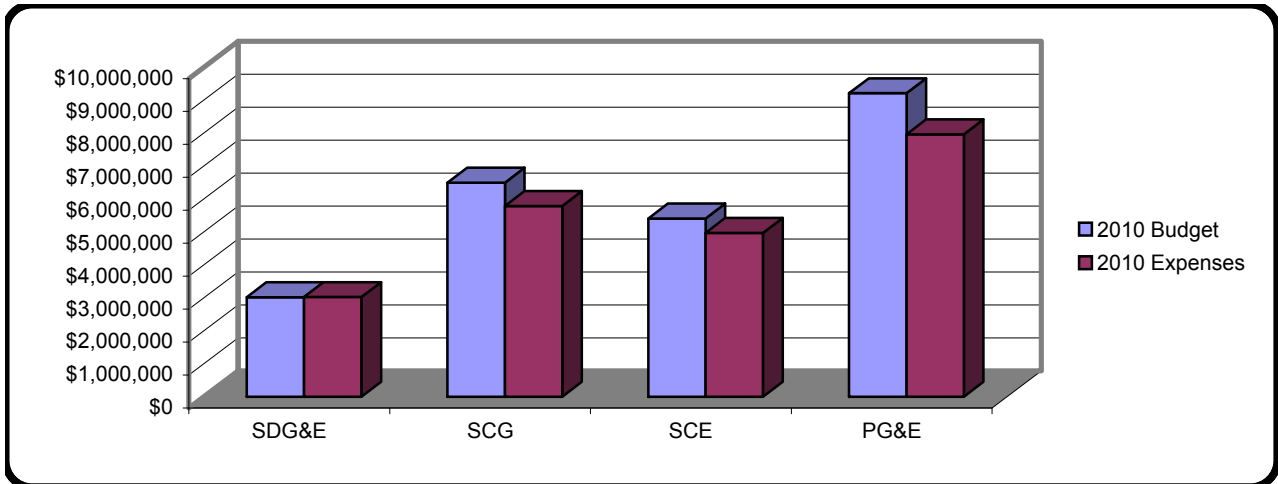




### CARE Authorized Administrative Budget and Year-to-Date Expenses

	SDG&E	SCG	SCE	PG&E
2010 Budget	\$3,023,803	\$6,500,126	\$5,412,000	\$9,216,000
2010 Expenses	\$3,026,383	\$5,792,823	\$4,974,144	\$7,970,145

Utilities' 2010 data are preliminary and may change in the LIEE Annual Reports to be filed on May 1, 2011.





California Public  
Utilities Commission

CPUC Home

## CALIFORNIA PUBLIC UTILITIES COMMISSION

### Service Lists

**PROCEEDING: A0805022 - PG&E - FOR APPROVAL**

**FILER: PACIFIC GAS AND ELECTRIC COMPANY**

**LIST NAME: LIST**

**LAST CHANGED: JANUARY 21, 2011**

[DOWNLOAD THE COMMA-DELIMITED FILE](#)  
[ABOUT COMMA-DELIMITED FILES](#)

[Back to Service Lists Index](#)

### Parties

ALLAN RAGO  
QUALITY CONSERVATION SERVICES, INC.  
EMAIL ONLY  
EMAIL ONLY, CA 00000  
FOR: THE ENERGY EFFICIENCY COUNCIL;  
QUALITY CONSERVATION SERVICES, INC.

ALEX JACKSON  
NATURAL RESOURCES DEFENSE COUNCIL  
EMAIL ONLY  
EMAIL ONLY, CA 00000-0000  
FOR: NATURAL RESOURCES DEFENSE COUNCIL

HAYLEY GOODSON  
THE UTILITY REFORM NETWORK  
EMAIL ONLY  
EMAIL ONLY, CA 00000-0000  
FOR: TURN

CATHERINE MAZZEO  
SOUTHWEST GAS CORPORATION  
5241 SPRING MOUNTAIN ROAD  
LAS VEGAS, NV 89150-0002  
FOR: SOUTHWEST GAS CORPORATION

HOLLY J. LLOYD  
ANALYST III/STATE REGULATORY AFFAIRS  
SOUTHWEST GAS CORPORATION  
5241 SPRING MOUNTAIN ROAD  
LAS VEGAS, NV 89150-0002  
FOR: SOUTHWEST GAS CORPORATION

ELENA MELLO  
SIERRA PACIFIC POWER COMPANY  
6100 NEIL ROAD  
RENO, NV 89520

MICHAEL R. THORP  
SO CAL GAS AND SDG&E  
555 WEST FIFTH STREET, STE 1400  
LOS ANGELES, CA 90013-1011

ALEX SOTOMAYOR  
MARAVILLA FOUNDATION  
5729 UNION PACIFIC AVENUE  
LOS ANGELES, CA 90022  
FOR: MARAVILLA FOUNDATION

ARLEEN NOVOTNEY  
SOUTHERN CALIFORNIA FORUM  
941 PALMS BLVD.  
VENICE, CA 90291  
FOR: SELF

RICHARD VILLASENOR  
TELACU  
12252 MC CANN DRIVE  
SANTA FE SPRINGS, CA 90670

LUIS A. CHAVEZ  
WINEGARD ENERGY, INC.  
5354 IRWINDALE AVE., BUILDING B  
IRWINDALE, CA 91706  
FOR: WINEGARD ENERGY, INC.

MICHAEL MONTOYA  
SENIOR ATTORNEY  
SOUTHERN CALIFORNIA EDISON  
2244 WALNUT GROVE AVE.  
ROSEMEAD, CA 91770

MONICA GHATTAS  
SOUTHERN CALIFORNIA EDISON COMPANY  
2244 WALNUT GROVE AVENUE  
ROSEMEAD, CA 91770  
FOR: SOUTHERN CALIFORNIA EDISON COMPANY

KEITH SWITZER  
BEAR VALLEY ELECTRIC SERVICE  
630 EAST FOOTHILL BLVD.  
SAN DIMAS, CA 91773  
FOR: BEAR VALLEY ELECTRIC SERVICE

RONALD MOORE  
GOLDEN STATE WATER/BEAR VALLEY ELECTRIC  
630 EAST FOOTHILL BOULEVARD  
SAN DIMAS, CA 91773

DON WOOD SR.  
PACIFIC ENERGY POLICY CENTER  
4539 LEE AVENUE  
LA MESA, CA 91941

BRUCE PATTON  
RANCHO VALLEY BUILDERS, INC.  
647 AERO WAY  
ESCONDIDO, CA 92029  
FOR: THE SAN DIEGO COMMUNITY ENERGY  
ADVISORY COMMITTEE (SDCEAC)

GEORGETTA J. BAKER  
SAN DIEGO GAS & ELECTRIC/SOCAL GAS  
101 ASH STREET, HQ 13  
SAN DIEGO, CA 92101  
FOR: SDG&E/SOCALGAS

KIM F. HASSAN  
SAN DIEGO GAS & ELECTRIC COMPANY  
101 ASH STREET, HQ-12  
SAN DIEGO, CA 92101  
FOR: SOUTHERN CALIFORNIA GAS COMPANY &  
SAN DIEGO GAS ELECTRIC COMPANY

JOY C. YAMAGATA  
SAN DIEGO GAS & ELECTRIC/SOCALGAS  
8330 CENTURY PARK COURT, CP 32 D  
SAN DIEGO, CA 92123-1530  
FOR: SAN DIEGO GAS & ELECTRIC  
COMPANY/SOUTHERN CALIFORNIA GAS COMPANY

LYDIA FLORES  
PRESIDENT  
AMERICAN INSULATION INC  
8305 MIRALANI DRIVE  
SAN DIEGO, CA 92126  
FOR: AMERICAN INSULATION INC.

TIMOTHY J. LAWLER  
CEO/PRESIDENT  
SUNDOWNER INSULATION, INC.  
1495 RAILROAD AVENUE  
CLOVIS, CA 93612  
FOR: SUNDOWNER INSULATION, INC.

ART BRICE  
RICHARD HEATH AND ASSOCIATES, INC.  
590 W. LOCUST AVENUE, SUITE 103  
FRESNO, CA 93650  
FOR: RICHARD HEATH AND ASSOCIATES, INC.

PAUL KERKORIAN  
UTILITY COST MANAGEMENT, LLC  
6475 N PALM AVE., STE. 105  
FRESNO, CA 93704  
FOR: NONPROFIT HOUSING ASSOCIATIO OF  
NORTHRN CALIFORNIA

JERRY H. MANN  
ATTORNEY AT LAW  
PERKINS, MANN & EVERETT  
2222 W. SHAW AVE., SUITE 202  
FRESNO, CA 93711  
FOR: RICHARD HEATH & ASSOCIATES

BENJAMIN CARROLL  
RENAISSANCE INC.  
2615 W DUDLEY AVE.  
FRESNO, CA 93728  
FOR: RENAISSANCE INC.

GREGORY REDICAN  
DEPUTY DIRECTOR  
COMMUNITY ACTION AGENCY OF SAN MATEO  
930 BRITTAN AVENUE  
SAN CARLOS, CA 94070  
FOR: SELF

WILLIAM F. PARKER  
COMMUNITY ACTION AGENCY OF SAN MATEO  
930 BRITTAN AVENUE  
SAN CARLOS, CA 94070  
FOR: COMMUNITY ACTION AGENCY OF SAN  
MATEO

KAREN CAMILLE WATTS-ZAGHA  
CALIF PUBLIC UTILITIES COMMISSION  
ENERGY PRICING AND CUSTOMER PROGRAMS BRA  
ROOM 4104  
505 VAN NESS AVENUE

RASHID A. RASHID  
CALIF PUBLIC UTILITIES COMMISSION  
LEGAL DIVISION  
ROOM 4107  
505 VAN NESS AVENUE

SAN FRANCISCO, CA 94102-3214  
FOR: DRA

SAN FRANCISCO, CA 94102-3214  
FOR: DRA

DANIEL F. COOLEY  
ATTORNEY AT LAW  
PACIFIC GAS AND ELECTRIC COMPANY  
77 BEALE STREET, MAIL CODE B30A  
SAN FRANCISCO, CA 94105  
FOR: PACIFIC GAS AND ELECTRIC COMPANY

JOSEPHINE WU  
PACIFIC GAS AND ELECTRIC COMPANY  
77 BEALE STREET, MC B9A  
SAN FRANCISCO, CA 94105

IRENE K. MOOSEN  
ATTORNEY AT LAW  
WESTERN MANUFACTURED HOUSING COMM. SVCS.  
53 SANTA YNEZ AVENUE  
SAN FRANCISCO, CA 94112

JOHN DUTCHER  
VP - REGULATORY AFFAIRS  
MOUNTAIN UTILITIES  
3210 CORTE VALENCIA  
FAIRFIELD, CA 94534-7875

DAVID C. CLARK  
SYNERGY COMPANIES  
28436 SATELLITE STREET  
HAYWARD, CA 94545  
FOR: SYNERGY COMPANIES, INC.

JULIE RICHARDSON  
ENERGY EFFICIENCY, INC.  
PO BOX 1612  
UNION CITY, CA 94587  
FOR: ENERGY EFFICIENCY, INC.

ROBERT GNAIZDA  
POLICY DIRECTOR/GENERAL COUNSEL  
THE GREENLINING INSTITUTE  
1918 UNIVERSITY AVENUE, SECOND FLOOR  
BERKELEY, CA 94704  
FOR: THE GREENLINING INSTITUTE

SAMUEL S. KANG  
THE GREENLINING INSTITUTE  
1918 UNIVERSITY AVENUE, 2ND FLR.  
BERKELEY, CA 94704  
FOR: THE GREENLINING INSTITUTE

LAILA CORREA  
LATINO ISSUES FORUM  
1918 UNIVERSITY AVENUE, STE. 3D  
BERKELEY, CA 94704-1051  
FOR: LATINO ISSUES FORUM

MARY - LEE KIMBER  
ATTORNEY AT LAW  
DISABILITY RIGHTS ADVOCATES  
2001 CENTER STREET, 3RD FLOOR  
BERKELEY, CA 94704-1204  
FOR: DISABILITY RIGHTS ADVOCATES

MELISSA W. KASNITZ  
DISABILITY RIGHTS ADVOCATES  
2001 CENTER STREET, FOURTH FLOOR  
BERKELEY, CA 94704-1204  
FOR: DISABILITY RIGHTS ADVOCATES

DANA ARMANINO  
COMMUNITY DEVELOPMENT AGENCY  
COUNTY OF MARIN  
3501 CIVIC CENTER DRIVE, ROOM 308  
SAN RAFAEL, CA 94903  
FOR: COUNTY OF MARIN COMMUNITY  
DEVELOPMENT AGENCY

SUSAN E. BROWN  
ATTORNEY AT LAW  
A WORLD INSTITUTE FOR SUSTAINABLE HUMANITY  
PO BOX 428  
MILL VALLEY, CA 94942  
FOR: A WORLD INSTITUTE FOR SUSTAINABLE  
HUMANITY

PETER HOFMANN  
BO ENTERPRISES  
43B EAST MAIN ST  
LOS GATOS, CA 95030-6907  
FOR: BO ENTERPRISES

MICHAEL LAMOND  
ALPINE NATURAL GAS OPERATING COMPANY  
PO BOX 550  
15 ST. ANDREWS ROAD, SUITE 7  
VALLEY SPRINGS, CA 95252

STEVE HEIM  
WESTERN INSULATION, L.P.  
2400 ROCKEFELLER DRIVE  
CERES, CA 95307  
FOR: WESTERN INSULATION, L.P.

BILL JULIAN  
43556 ALMOND LANE  
DAVIS, CA 95618

CAROLYN COX  
GENERAL MANAGER  
5213 ROSEANA COURT  
FAIR OAKS, CA 95628

GREGGORY L. WHEATLAND  
ELLISON SCHNEIDER & HARRIS L.L.P.

JAMES HODGES  
ACCES

2600 CAPITOL AVENUE, SUITE 400  
SACRAMENTO, CA 95816-5905  
FOR: SIERRA PACIFIC POWER COMPANY

1069 45TH STREET  
SACRAMENTO, CA 95819  
FOR: ACCES, THE COMMUNITY ACTION OF SAN  
MATEO COUNTY, INC., TELACU, THE  
MARAVILLA FOUNDATION

RAYMOND J. CZAHR, C.P.A.  
WEST COAST GAS COMPANY  
9203 BEATTY DRIVE  
SACRAMENTO, CA 95826

LOUISE A. PEREZ  
COMMUNITY RESOURCE PROJECT, INC.  
250 HARRIS AVENUE, SUITE 6  
SACRAMENTO, CA 95838  
FOR: SELF

CRISTAL BEDORTHA  
RESIDENTIAL WALL INSULATION  
3714 NELSON AVE.  
OROVILLE, CA 95965  
FOR: RESIDENTIAL WALL INSULATION

KEITH GRIFFITH  
SELF HELP HOME IMPROVEMENT PROJECT INC.  
3777 MEADOWVIEW DR. 100  
REDDING, CA 96002  
FOR: SELF HELP HOME IMPROVEMENT PROJECT  
INC.

MICHELLE R. MISHOE  
PACIFICORP  
825 NE MULTNOMAH STREET, SUITE 1800  
PORTLAND, OR 97232  
FOR: PACIFICORP

## Information Only

---

JANE S. PETERS  
RESEARCH INTO ACTION, INC.  
EMAIL ONLY  
EMAIL ONLY, CA 00000

JESSICA NELSON  
PLUMAS-SIERRA RURAL ELECTRIC CO-OP  
EMAIL ONLY  
EMAIL ONLY, CA 00000

LARA ETTENSON  
NATURAL RESOURCES DEFENSE COUNCIL  
EMAIL ONLY  
EMAIL ONLY, CA 00000

MARILYN WACKS  
CALIFORNIA HOUSING PARTNERSHIP CORP  
EMAIL ONLY  
EMAIL ONLY, CA 00000  
FOR: CALIFORNIA HOUSING PARTNERSHIP  
CORPORATION

STEPHANIE C. CHEN  
THE GREENLINING INSTITUTE  
EMAIL ONLY  
EMAIL ONLY, CA 00000  
FOR: THE GREENLINING INSTITUTE

TARYN CIARDELLA  
SR. LEGAL SECRETARY  
NV ENERGY  
EMAIL ONLY  
EMAIL ONLY, NV 00000

ZACHARY FRANKLIN  
GRID ALTERNATIVES  
EMAIL ONLY  
EMAIL ONLY, CA 00000  
FOR: GRID ALTERNATIVES

DAVID E. MORSE  
CALIFORNIA AMERICAN WATER CO.  
EMAIL ONLY  
EMAIL ONLY, CA 00000-0000

GLORIA BRITTON  
ANZA ELECTRIC CO-OPERATIVE, INC.  
EMAIL ONLY  
EMAIL ONLY, CA 00000-0000

KYLE JEFFERY  
RHA, INC.  
EMAIL ONLY  
EMAIL ONLY, CA 00000-0000

NARISHA BONAKDAR  
CALIFORNIA HOUSING PARTNERSHIP CORP.  
EMAIL ONLY  
EMAIL ONLY, CA 00000-0000  
FOR: CALIFORNIA HOUSING PARTNERSHIP  
CORP.

PEDRO VILLEGAS  
SEMPRA ENERGY UTILITIES  
EMAIL ONLY  
EMAIL ONLY, CA 00000-0000

RICHARD ESTEVES  
 SESCO, INC.  
 77 YACHT CLUB DRIVE, SUITE 1000  
 LAKE HOPATCONG, NJ 07849-1313

COMMERCE ENERGY, INC.  
 5251 WESTHEIMER RD., STE. 1000  
 HOUSTON, TX 77056-5414

DAVE MUNK  
 PROGRAM MANAGER  
 RESOURCE ACTION PROGRAM  
 2724 UPPER CATTLE CREEK ROAD  
 CARBONDALE, CO 81623

KRISTIEN TARY  
 STATE REGULATORY AFFAIRS  
 SOUTHWEST GAS CORPORATION  
 5241 SPRING MOUNTAIN ROAD  
 LAS VEGAS, NV 89150

CHRISTOPHER HILEN  
 SIERRA PACIFIC POWER CO.  
 PO BOX 10100  
 RENO, NV 89511

TREVOR DILLARD  
 RAE REGULATORY RELATIONS  
 SIERRA PACIFIC POWER COMPANY  
 6100 NEAL ROAD, MS S4A50 / PO BOX 10100  
 RENO, NV 89520-0024

STEVEN D. PATRICK  
 SAN DIEGO GAS AND ELECTRIC COMPANY  
 555 WEST FIFTH STREET, SUITE 1400  
 LOS ANGELES, CA 90013-1011

SENATOR RICHARD POLANCO  
 3701 GLENALBYN DRIVE  
 LOS ANGELES, CA 90065

RON GARCIA  
 RELIABLE ENERGY MANAGEMENT, INC.  
 6250 PARAMOUNT BLVD.  
 LONG BEACH, CA 90805

JOSE ATILIO HERNANDEZ  
 LIOB MEMBER  
 LIOB  
 9237 GERALD STREET  
 NORTHRIDGE, CA 91343

SHEILA LEE  
 REGULATORY, CONTROLS AND SOLICITATIONS  
 SOUTHERN CALIFORNIA EDISON COMPANY  
 6042 N. IRWINDALE AVENUE, SUITE A  
 IRWINDALE, CA 91702

WALLIS J. WINEGAR  
 WINEGARD ENERGY, INC  
 5354 IRWINDALE AVENUE, BLDG B.  
 IRWINDALE, CA 91706

WALLIS WINEGARD  
 WINEGARD ENERGY, INC.  
 5354 IRWINDALE AVE., BUILDING B  
 IRWINDALE, CA 91706  
 FOR: WINEGARD ENERGY, INC.

PAUL DELANEY  
 AMERICAN UTILITY NETWORK (A.U.N.)  
 10705 DEER CANYON DRIVE  
 ALTA LOMA, CA 91737

AKBAR JAZAYEIRI  
 DIR OF REVENUE & TARIFFS  
 SOUTHERN CALIFORNIA EDISON COMPANY (338)  
 2241 WALNUT GROVE AVE. / PO BOX 800  
 ROSEMEAD, CA 91770

CASE ADMINISTRATION  
 SOUTHERN CALIFORNIA EDISON COMPANY  
 PO BOX 800 / 2244 WALNUT GROVE AVE.  
 ROSEMEAD, CA 91770

JACK F. PARKHILL  
 SOUTHERN CALIFORNIA EDISON  
 2131 WALNUT GROVE AVENUE  
 ROSEMEAD, CA 91770

JEANNIE HARRELL  
 SOUTHERN CALIFORNIA EDISON COMPANY  
 2131 WALNUT GROVE AVENUE  
 ROSEMEAD, CA 91770

JENNIFER M. TSAO SHIGEKAWA  
 SOUTHERN CALIFORNIA EDISON COMPANY  
 2244 WALNUT GROVE AVENUE  
 ROSEMEAD, CA 91770

JOHN FASANA  
 SOUTHERN CALIFORNIA EDISON  
 2131 WALNUT GOVE AVE.  
 ROSEMEAD, CA 91770

LARRY R. COPE  
 ATTORNEY AT LAW  
 SOUTHERN CALIFORNIA EDISON  
 PO BOX 800, 2244 WALNUT GROVE AVENUE  
 ROSEMEAD, CA 91770  
 FOR: SOUTHERN CALIFORNIA EDISON COMPANY

ROBERTO DEL REAL  
 SOUTHERN CALIFORNIA EDISON COMPANY  
 2131 WALNUT GROVE AVENUE  
 ROSEMEAD, CA 91770

MARK MCNULTY  
4654 MAYAPAN DR  
LA MESA, CA 91941-7148  
FOR: BEAR VALLEY ELECTRIC/GOLDEN STATE  
WATER

YOLE WHITING  
12532 JACKSON HILL LANE  
EL CAJON, CA 92021

JOHN JENSEN  
REGIONAL MANAGER  
RICHARD HEATH AND ASSOCIATES, INC.  
7847 CONVOY COURT , SUITE 102  
SAN DIEGO, CA 92111

REGULATORY AFFAIRS  
SAN DIEGO GAS & ELECTRIC CO.  
8330 CENTURY PARK COURT-CP31E  
SAN DIEGO, CA 92123-1530

STEVE RAHON  
SAN DIEGO GAS & ELECTRIC COMPANY  
8330 CENTURY PARK COURT, CP32C  
SAN DIEGO, CA 92123-1548

YVETTE VAZQUEZ  
SAN DIEGO GAS & ELECTRIC  
8326 CENTURY PARK COURT, MC CP62E  
SAN DIEGO, CA 92123-1569

FAITH BAUTISTA  
PRESIDENT  
NATIONAL ASIAN AMERICAN COALITION  
9580 BLACK MOUNTAIN ROAD, STE. A  
SAN DIEGO, CA 92126

JOHN NEWCOMB  
696 SOUTH TIPPECANOE AVENUE  
SAN BERNARDINO, CA 92415  
FOR: COMMUNITY ACTION PARTNERSHIP OF  
SAN BERNARDINO COUNTY

MARIA Y. JUAREZ  
DEPUTY DIRECTOR  
DEPARTMENT OF COUMMINTY ACTION  
2038 IOWA AVENUE, SUITE B-102  
RIVERSIDE, CA 92507

BILL BELANSKY  
WESTERN INSULATION  
680 COLUMBIA AVE  
RIVERSIDE, CA 92507-2144

RICHARD SHAW  
PRESIDENT  
SOUTHERN CALIFORNIA FORUM  
PO BOX 469  
FILLMORE, CA 93016

JIM MCNAMARA  
SAN LUIS OBISPO COUNTY, INC.  
1030 SOUTHWOOD DRIVE  
SAN LUIS OBISPO, CA 93401

ELISABETH ADAMS  
ASSERT INC.  
155 W. AVENUE J-5  
LANCASTER, CA 93534

HECTOR HUERTA  
RICHARD HEATH AND ASSOCIATES, INC.  
590 W. LOCUST AVE., SUITE 103  
FRESNO, CA 93650

JOE WILLIAMS  
CEO  
RICHARD HEATH AND ASSOCIATES, INC.  
590 W. LOCUST AVENUE, STE 103  
FRESNO, CA 93650

KRISTINE LUCERO  
EXECUTIVE ASSISTANT  
RICHARD HEATH AND ASSOCIATES, INC.  
590 W. LOCUST AVE., STE. 103  
FRESNO, CA 93650

MARK SHIRIN  
VENTURA TV APPLIANCE CENTER  
3619 E VENTURA BLVD  
FRESNO, CA 93702-5009

MICHAEL WILLIAMS  
LIOB MEMBER  
LIOB  
3045 N. SUNNYSIDE, SUITE 101  
FRESNO, CA 93727

ORTENSIA LOPEZ  
EXECUTIVE DIRECTOR  
EL CONCILIO OF SAN MATEO  
1419 BURLINGAME AVE., SUITE N  
BURLINGAME, CA 94010

ANN KELLY  
DEPT. OF THE ENVIRONMENT  
CITY AND COUNTY OF SAN FRANCISCO  
11 GROVE STREET  
SAN FRANCISCO, CA 94102

BRUCE FOSTER  
SOUTHERN CALIFORNIA EDISON COMPANY  
601 VAN NESS AVENUE, STE. 2040  
SAN FRANCISCO, CA 94102

DONNA L. WAGONER  
CALIF PUBLIC UTILITIES COMMISSION  
UTILITY AUDIT, FINANCE & COMPLIANCE BRAN  
AREA 3-C  
505 VAN NESS AVENUE  
SAN FRANCISCO, CA 94102-3214

JEANNE M. SOLE  
CITY AND COUNTY OF SAN FRANCISCO  
CITY HALL, RM 234  
1 DR. CARLTON B. GOODLET PLACE  
SAN FRANCISCO, CA 94102-4682

BRANDON TRAN  
PACIFIC GAS AND ELECTRIC COMPANY  
245 MARKET STREET, MC N9E  
SAN FRANCISCO, CA 94105

BRETT SEARLE  
SR. PROJECT MGMT ANALYST  
PACIFIC GAS AND ELECTRIC COMPANY  
77 BEALE STREET, RM 559A, MCB5K  
SAN FRANCISCO, CA 94105

CRAIG M. BUCHSBAUM  
ATTORNEY AT LAW  
PACIFIC GAS AND ELECTRIC COMPANY  
77 BEALE STREET, B30A  
SAN FRANCISCO, CA 94105  
FOR: PACIFIC GAS AND ELECTRIC COMPANY

LINDA FONTES  
PACIFIC GAS & ELECTRIC COMPANY  
123 MISSION ROOM 1404 MC H14F  
SAN FRANCISCO, CA 94105

LISE H. JORDAN, ESQ.  
PACIFIC GAS AND ELECTRIC COMPANY  
77 BEALE STREET, B30A. RM 3151  
SAN FRANCISCO, CA 94105

MARDI WALTON  
SR. REGULATORY ANALYST  
PACIFIC GAS AND ELECTRIC COMPANY  
77 BEALE STREET, MC B9A  
SAN FRANCISCO, CA 94105

STEVEN R. HAERTLE  
PACIFIC GAS AND ELECTRIC COMPANY  
77 BEALE STREET, MC B9A  
SAN FRANCISCO, CA 94105

TINA NGUYEN  
PACIFIC GAS AND ELECTRIC COMPANY  
123 MISSION-ROOM 1456  
SAN FRANCISCO, CA 94105

STEVEN MOSS  
SAN FRANCISCO COMMUNITY POWER  
2325 THIRD STREET, STE 344  
SAN FRANCISCO, CA 94107  
FOR: SAN FRANCISCO COMMUNITY POWER

JANINE L. SCANCARELLI  
ATTORNEY AT LAW  
CROWELL & MORING LLP  
275 BATTERY STREET, 23RD FLOOR  
SAN FRANCISCO, CA 94111

CALIFORNIA ENERGY MARKTS  
425 DIVISADERO STREET, STE 303  
SAN FRANCISCO, CA 94117

REGULATORY FILE ROOM  
PACIFIC GAS AND ELECTRIC COMPANY  
PO BOX 7442  
SAN FRANCISCO, CA 94120

BRIAN K. CHERRY  
DIRECTOR, REGULATORY RELATIONS  
PACIFIC GAS AND ELECTRIC COMPANY (39)  
77N BEALE ST., PO BOX 770000, MC B10C  
SAN FRANCISCO, CA 94177

CASE COORDINATION  
PACIFIC GAS AND ELECTRIC COMPANY  
PO BOX 770000; MC B9A  
SAN FRANCISCO, CA 94177

MARY O'DRAIN  
PACIFIC GAS AND ELECTRIC COMPANY  
123 MISSION - ROOM 1410, MC H14G  
SAN FRANCISCO, CA 94177

JAMES DEZELL  
RHA, INC.  
SUITE 205  
1151 HARBOR BAY PKWY  
ALAMEDA, CA 94502

BARBARA WILLIAMS  
RHA, INC.  
1151 HARBOR BAY PKWY STE. 205  
ALAMEDA, CA 94502-6561

DUTCHER JOHN  
V.P. REGULATORY AFFAIRS  
MOUNTAIN UTILITIES  
3210 CORTE VALENCIA  
FAIRFIELD, CA 94534  
FOR: MOUNTAIN UTILITIES

STEVEN R. SHALLENBERGER  
SYNERGY COMPANIES  
28436 SATTELITE STREET  
HAYWARD, CA 94545

FRANCES L. THOMPSON  
PACIFIC GAS AND ELECTRIC COMPANY  
3401 CROW CANYON ROAD, 170C  
SAN RAMON, CA 94583

RICK C. NOGER  
PRAXAIR, INC.  
2430 CAMINO RAMON DRIVE, STE. 300  
SAN RAMON, CA 94583



LADONNA WILLIAMS  
EXECUTIVE DIRECTOR  
PO BOX 5653  
VALLEJO, CA 94591

SARAH BESERRA  
CALIFORNIA REPORTS.COM  
39 CASTLE HILL COURT  
VALLEJO, CA 94591  
FOR: CALIFORNIA REPORTS.COM

VIEN V. TRUONG, ESQ  
GREEN FOR ALL  
1611 TELEGRAPH AVENUE, SUITE 600  
OAKLAND, CA 94601  
FOR: GREEN FOR ALL

VIVIAN CHANG  
GREEN FOR ALL  
1611 TELEGRAPH AVENUE, SUITE 600  
OAKLAND, CA 94601

ALEX KANG  
ITRON, INC.  
1111 BROADWAY, STE. 1800  
OAKLAND, CA 94607

JODY S. LONDON  
JODY LONDON CONSULTING  
PO BOX 3629  
OAKLAND, CA 94609  
FOR: THE LOCAL GOVERNMENT SUSTAINABLE  
ENERGY COALITION

EMILY H. GORDON  
GREEN FOR ALL  
1611 TELEGRAPH AVENUE, SUITE 600  
OAKLAND, CA 94612

DOCKET COORDINATOR  
5727 KEITH ST.  
OAKLAND, CA 94618

KAREN NOTSUND  
ASSISTANT DIRECTOR  
UC ENERGY INSTITUTE  
2547 CHANNING WAY 5180  
BERKELEY, CA 94720-5180

SARA BIRMINGHAM  
DIRECTOR, WESTERN POLICY  
SOLAR ALLIANCE  
11 LYNN COURT  
SAN RAFAEL, CA 94901  
FOR: SOLAR ALLIANCE

MICHELE RODRIGUEZ  
PLANNING SUSTAINABLE COMMUNITIES  
220 MCALLISTER AVENUE  
KENTFIELD, CA 94904

MARY TUCKER  
ENVIRONMENTAL SERVICES DEPARTMENT  
CITY OF SAN JOSE  
200 E. SANTA CLARA, 10TH FLOOR  
SAN JOSE, CA 95113

DOUGLAS MOIR  
WESTERN APPLIANCE  
1976 W. SAN CARLOS STREET  
SAN JOSE, CA 95128

STEPHANIE BORBA  
WESTERN INSULATION, L.P.  
2400 ROCKEFELLER DRIVE  
CERES, CA 95307

THOMAS S KIMBALL  
MODESTO IRRIGATION DISTRICT  
1231 11TH STREET  
MODESTO, CA 95352-4060

BOB HONDEVILLE  
MODESTO IRRIGATION DISTRICT  
1231 11TH STREET  
MODESTO, CA 95354

JOY A. WARREN  
MODESTO IRRIGATION DISTRICT  
1231 11TH STREET  
MODESTO, CA 95354

RICHARD MCCANN  
M.CUBED  
2655 PORTAGE BAY ROAD, SUITE 3  
DAVIS, CA 95616

WAYNE AMER  
PRESIDENT  
MOUNTAIN UTILITIES (906)  
PO BOX 205  
KIRKWOOD, CA 95646

ROBERT E. BURT  
INSULATION CONTRACTORS ASSN.  
3479 ORANGE GROVE AVE., STE. A  
NORTH HIGHLANDS, CA 95660

ROBERT J. BICKER  
LEGISLATIVE ANALYST  
CALIFORNIA APARTMENT ASSOCIATION  
980 NINTH STREET, SUITE 200  
SACRAMENTO, CA 95814

RYAN BERNARDO  
BRAUN BLAISING MCLAUGHLIN, P.C.  
915 L STREET, SUITE 1270  
SACRAMENTO, CA 95814

SHEILA DEY  
EXECUTIVE DIRECTOR  
WESTERN MANUFACTURED HOUSING COMMUNITIES  
455 CAPITAL MALL STE 800  
SACRAMENTO, CA 95814

DEVI EDEN  
ADVISOR TO COMMISSIONER ROSENFELD  
CALIFORNIA ENERGY COMMISSION  
1516 9TH STREET, MS 35  
SACRAMENTO, CA 95814-5512

JEDEDIAH J. GIBSON  
ATTORNEY AT LAW  
ELLISON SCHNEIDER & HARRIS LLP  
2600 CAPITOL AVENUE, SUITE 400  
SACRAMENTO, CA 95816-5905  
FOR: SIERRA PACIFIC POWER COMPANY

JASON WIMBLEY  
DIVISION CHIEF, ENERGY&ENVIRON PROGRAMS  
DEPT. OF COMMUNITY SERVICES & DEVELOPMEN  
2389 GATEWAY OAKS DRIVE  
SACRAMENTO, CA 95833

DAVE STEPHENSON  
RATE REGULATION MANAGER - WESTERN REGIO  
AMERICAN WATER WORKS SERVICE CO.  
4701 BELOIT DRIVE  
SACRAMENTO, CA 95838

JAMES O'BANNON  
RICHARD HEATH AND ASSOCIATES, INC.  
1026 MANGROVE AVE., STE 20  
CHICO, CA 95926

PAMELA GORSUCH  
PROJECT MANAGER  
RICHARD HEATH AND ASSOCIATES, INC.  
1026 MANGROVE AVENUE, SUITE 20  
CHICO, CA 95926

SCOTT BERG  
SELF HELP HOME IMPROVEMENT PROJECT INC.  
3777 MEADOWVIEW DR., 100  
REDDING, CA 96002  
FOR: SELF HELP HOME IMPROVEMENT PROJECT  
INC.

DIANA BJORNSKOV  
SENIOR PROGRAM MANAGER  
PORTLAND ENERGY CONSERVATION, INC  
1400 SW 5TH AVENUE, STE 700  
PORTLAND, OR 97201

STEPHEN GROVER, PH.D.  
ECONORTHWEST  
222 SW COLUMBIA ST., STE. 1600  
PORTLAND, OR 97201-6616

STEVE GROVER  
ECONORTHWEST  
222 SW COLUMBIA BLVD., STE. 1600  
PORTLAND, OR 97201-6616

M. SAMI KHAWAJA, PH.D  
QUANTEC, LLC  
SUITE 400  
720 SW WASHINGTON STREET  
PORTLAND, OR 97205

CATHIE ALLEN  
DIR., REGULATORY AFFAIRS  
PACIFICORP  
825 NE MULTNOMAH STREET, SUITE 2000  
PORTLAND, OR 97232

MARISA DECRISTOFORO  
PACIFICORP  
825 NE MULTNOMAH STREET, SUITE 800  
PORTLAND, OR 97232

DAVE SULLIVAN P.E.  
CONSULTING ENGINEER  
614 38TH PLACE  
FLORENCE, OR 97439-8216

## State Service

---

MATTHEW TISDALE  
CALIFORNIA PUBLIC UTILITIES COMMISSION  
EMAIL ONLY  
EMAIL ONLY, CA 00000

TORY FRANCISCO  
CALIFORNIA PUBLIC UTILITIES COMMISSION  
EMAIL ONLY  
EMAIL ONLY, CA 00000

VAROUJAN JINBACHIAN  
CALIF PUBLIC UTILITIES COMMISSION  
PUBLIC ADVISOR OFFICE  
320 WEST 4TH STREET SUITE 500  
LOS ANGELES, CA 90013

ALIK LEE  
CALIF PUBLIC UTILITIES COMMISSION  
COMMUNICATIONS POLICY BRANCH  
ROOM 4209  
505 VAN NESS AVENUE

SAN FRANCISCO, CA 94102-3214

AVA N. TRAN  
CALIF PUBLIC UTILITIES COMMISSION  
ENERGY DIVISION  
AREA 4-A  
505 VAN NESS AVENUE  
SAN FRANCISCO, CA 94102-3214

HARVEY Y. MORRIS  
CALIF PUBLIC UTILITIES COMMISSION  
LEGAL DIVISION  
ROOM 5036  
505 VAN NESS AVENUE  
SAN FRANCISCO, CA 94102-3214  
FOR: DRA

HAZLYN FORTUNE  
CALIF PUBLIC UTILITIES COMMISSION  
ENERGY DIVISION  
AREA 4-A  
505 VAN NESS AVENUE  
SAN FRANCISCO, CA 94102-3214

JOE COMO  
CALIF PUBLIC UTILITIES COMMISSION  
DRA - ADMINISTRATIVE BRANCH  
ROOM 4101  
505 VAN NESS AVENUE  
SAN FRANCISCO, CA 94102-3214

JOSEPHINE EMELO  
CALIF PUBLIC UTILITIES COMMISSION  
ENERGY PRICING AND CUSTOMER PROGRAMS BRA  
ROOM 4104  
505 VAN NESS AVENUE  
SAN FRANCISCO, CA 94102-3214

KELLY HYMES  
CALIF PUBLIC UTILITIES COMMISSION  
EXECUTIVE DIVISION  
ROOM 5306  
505 VAN NESS AVENUE  
SAN FRANCISCO, CA 94102-3214

KIMBERLY KIM  
CALIF PUBLIC UTILITIES COMMISSION  
DIVISION OF ADMINISTRATIVE LAW JUDGES  
ROOM 5021  
505 VAN NESS AVENUE  
SAN FRANCISCO, CA 94102-3214

MARIANA C. CAMPBELL  
CALIF PUBLIC UTILITIES COMMISSION  
ENERGY COST OF SERVICE & NATURAL GAS BRA  
ROOM 4205  
505 VAN NESS AVENUE  
SAN FRANCISCO, CA 94102-3214

MEGHA LAKHCHAURA  
CALIF PUBLIC UTILITIES COMMISSION  
ENERGY DIVISION  
AREA 4-A  
505 VAN NESS AVENUE  
SAN FRANCISCO, CA 94102-3214

MELICIA CHARLES  
CALIF PUBLIC UTILITIES COMMISSION  
EXECUTIVE DIVISION  
ROOM 5306  
505 VAN NESS AVENUE  
SAN FRANCISCO, CA 94102-3214

PAMELA NATALONI  
CALIF PUBLIC UTILITIES COMMISSION  
LEGAL DIVISION  
ROOM 5124  
505 VAN NESS AVENUE  
SAN FRANCISCO, CA 94102-3214

RISA HERNANDEZ  
CALIF PUBLIC UTILITIES COMMISSION  
COMMUNICATIONS POLICY BRANCH  
ROOM 4209  
505 VAN NESS AVENUE  
SAN FRANCISCO, CA 94102-3214

ROBERT KINOSIAN  
CALIF PUBLIC UTILITIES COMMISSION  
EXECUTIVE DIVISION  
ROOM 5202  
505 VAN NESS AVENUE  
SAN FRANCISCO, CA 94102-3214  
FOR: DRA

ROBERT LEHMAN  
CALIF PUBLIC UTILITIES COMMISSION  
COMMUNICATIONS POLICY BRANCH  
ROOM 4209  
505 VAN NESS AVENUE  
SAN FRANCISCO, CA 94102-3214

SARITA SARVATE  
CALIF PUBLIC UTILITIES COMMISSION  
ENERGY DIVISION  
AREA 4-A  
505 VAN NESS AVENUE  
SAN FRANCISCO, CA 94102-3214

SARVJIT S. RANDHAWA  
CALIF PUBLIC UTILITIES COMMISSION  
ENERGY DIVISION  
AREA 4-A  
505 VAN NESS AVENUE  
SAN FRANCISCO, CA 94102-3214

SYREETA GIBBS  
CALIF PUBLIC UTILITIES COMMISSION  
ENERGY DIVISION  
AREA 4-A  
505 VAN NESS AVENUE  
SAN FRANCISCO, CA 94102-3214

THOMAS M. RENAGHAN  
CALIF PUBLIC UTILITIES COMMISSION  
ENERGY COST OF SERVICE & NATURAL GAS BRA  
ROOM 4205  
505 VAN NESS AVENUE  
SAN FRANCISCO, CA 94102-3214

ZAIDA AMAYA-PINEDA  
CALIF PUBLIC UTILITIES COMMISSION  
ENERGY DIVISION  
770 L STREET, SUITE 1050  
SACRAMENTO, CA 95814

KEVIN S. NAKAMURA  
CALIF PUBLIC UTILITIES COMMISSION  
UTILITY AUDIT, FINANCE & COMPLIANCE BRAN  
180 Promenade Circle, Suite 115  
Sacramento, CA 95834

---

[TOP OF PAGE](#)  
[BACK TO INDEX OF SERVICE LISTS](#)